



## gateProtect GPO 75

Designed for Small and Remote offices which do not need UTM functionality



### „Next Generation Firewall Appliances“

The “Next Generation Firewall Appliances” from gateProtect are characterized by optimal scalability, security and performance. Thanks to the unique and patented eGUI<sup>®</sup> technology, gateProtect sets new standards when it comes to the configuration of modern security systems.

gateProtect's eGUI<sup>®</sup> technology increases operating security and efficiency to a previously unattained level. Furthermore, gateProtect is the only manufacturer worldwide who implements the ISO NORM 9241 standard.

Like all large gateProtect solutions, the GPO 75 has extensive firewall and VPN functions including VLAN, Layer-8 technology, single sign-on, bridging, VPN SSL via x.509 certificates & VPN IPsec, and the very latest procedure-oriented eGUI<sup>®</sup> technology. The series GPO 75 is designed for Small Offices as well as for the remote connection to a bigger corporate network. **It's not possible to activate any UTM functionality like Antivirus, Antispam or Web Filter.**

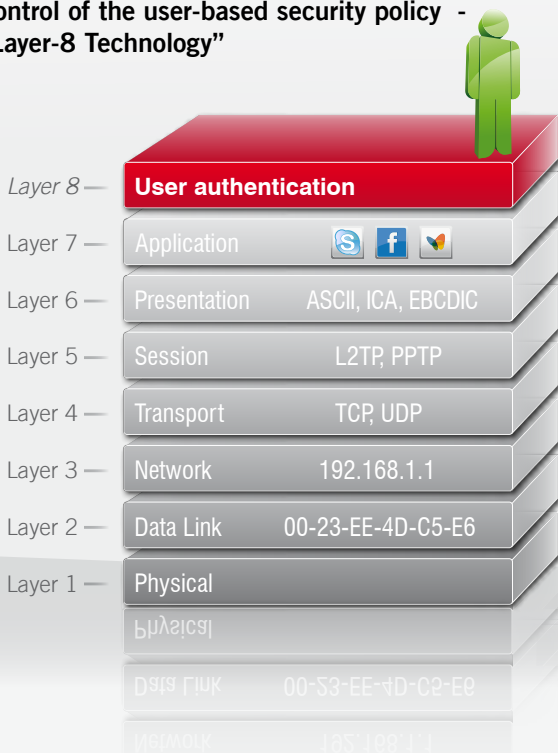
„The eGUI is a pleasure to work with [...]“

Dave Mitchell, SC Magazine  
UTM Review 2009

„We must applaud the brilliant arrangement and pedagogic approach.“

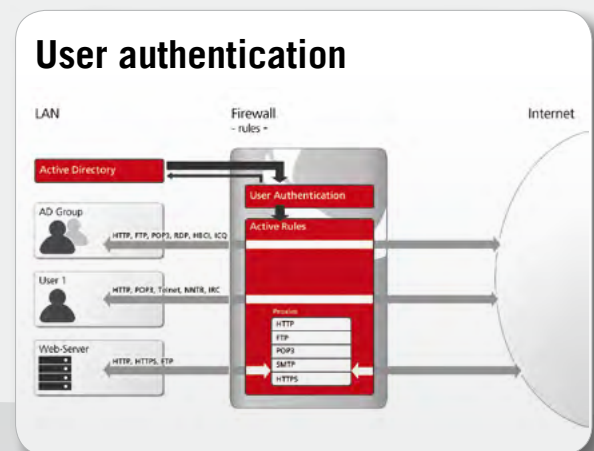
Lars Dobos, Tech World  
UTM Review 2010

### Control of the user-based security policy - “Layer-8 Technology”



### The “Layer-8 Technology” from gateProtect treats the user identity as the 8th layer of the OSI model

All of gateProtect's “Next Generation Firewall Appliances” offer security and productivity at all levels and across all services – from layer 2 to layer 8 with identity-based policies.



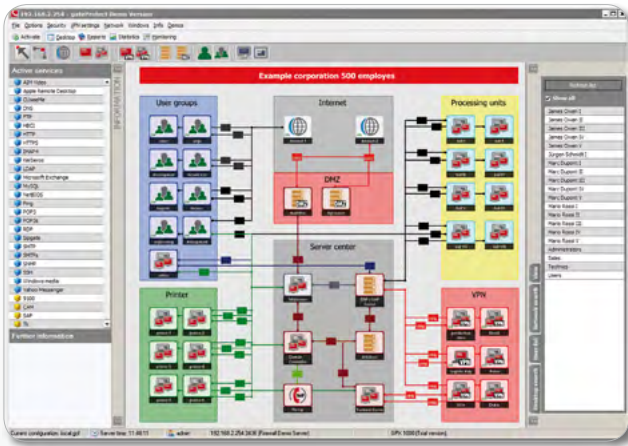


**gateProtect GPO 75**

**ergonomic Graphical User Interface**

**The unique eGUI<sup>®</sup> technology revolutionizes the operation of “Next Generation Firewall Appliances”**

The highest security risk modern IT networks are facing relates to the fact that increasingly complex security functions are required in order to effectively block attacks. This inevitably leads to systems that are extremely complex to operate, which, in turn, means the risk of user errors increases exponentially. As a result, operation as well as configuration errors in IT systems are the cause of around 98% of all security vulnerabilities in companies nowadays. This risk, together with the constantly increasing amount of work that is required to manage IT security systems, means a whole new approach to the operation of professional security solutions.



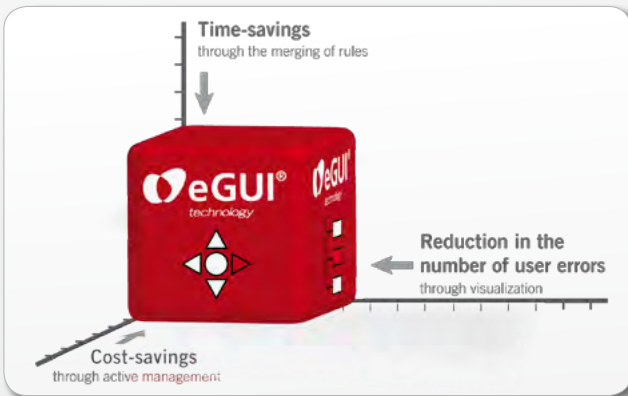
Central eGUI<sup>®</sup> interface from gateProtect

**eGUI<sup>®</sup>**

The answer to these problems is the patented and unique eGUI<sup>®</sup> technology from gateProtect.

The interface concepts of gateProtect’s competitors follow a “function-oriented” approach. However, this approach does not include the interaction between humans and machines. gateProtect therefore developed the eGUI<sup>®</sup> technology, which utilizes a “process-oriented” approach that includes the consequent implementation of the ISO Norm 9241 standard.

The program also provides a consistent layout, which only displays the specific information that the user actually requires for the current activity, no matter which application is being used.



**Benefits provided by the eGUI<sup>®</sup> interface**

- \_Enormous time-savings through a reduction in the number of rules
- \_Reduction in the number of user errors thanks to the visualization of the entire network
- \_Reduced operating costs through active management

**Initial configuration**  
(Firewall configuration, import and setup of users, configuration, etc.)

gateProtect ■ **70% Time-savings**

Mitbewerber I

II

III

IV

**Ongoing administration**  
(Training of new administrators or deputies, who should be able to configure the firewall)

gateProtect ■ **80% Time-savings**

Mitbewerber I

II

III

IV

**Training phase**  
(Training of new administrators or deputies, who should be able to configure the firewall)

gateProtect ■ **95% Time-savings**

Mitbewerber I

II

III

IV

*Study from 2009, which compared the time required to configure firewalls from different providers*

## gateProtect GPO 75

## Features and performance overview



Rear view

### Performance

Note: In brackets (xx) for version a

Firewall throughput	VPN IPSec throughput
200 Mbps	75 (65) Mbps

### Hardware specifications

Dimensions DxWxH (mm)	Weight	Input Voltage	Consumption (Full load)	Operating Temperature	Network interfaces	Concurrent sessions	New sessions per second
154 x 252 x 44	2,9 kg	AC 100-240	30 W	C° 0-40	4 Ports (3 Ports) 1 00 MBit: 4 (3)	75 000	2 000

## Feature Specifications

### ► Firewall

- Stateful inspection
- Connection-tracking TCP/UDP/ICMP
- SPI and proxy combinable
- Time controlled firewall rules, content filter and internet connection
- IP-ranges, IP-groups
- Layer 7-filter
- Port-ranges
- Self- and predefined ports
- Supported protocols:  
TCP, UDP, ICMP, GRE, ESP, AH

### ► Management

- eGUI technology
  - ISO 9241 certified
  - visual feedback immediately supplied for each setting
  - self-explanatory functions
  - overview of all active services
  - overview of the whole network
  - Layer and zoom function
- Languages: English, German, French, Italian
- Role-based firewall administration
- Role-based statistic-client
- SSH-CLI
- Desktop configuration saved / restored separately from backup
- CLI on serial line
- Object oriented firewall configuration
- Direct Client Update function

### ► LAN / WAN-support

- Ethernet 10/100 Mbit/s
- Twisted-Pair / Fibre-Optics
- MTU changeable (Ethernet/DSL)
- PPPoE, PPTPoE
- ISDN
- PPP-PAP, PPP-CHAP authentication
- Inactivity timeout
- Forced disconnect time
- Cabledemod, xDSL
- Concurrent connections
- Backup-connections
- Connection availability check
- Loadbalancing
- Time controlled internet connections
- Manual and automatic DNS assignment
- Multiple dyn-DNS support
- Supports 8 different dyn-DNS-services
- Source based routing
- Routing protocols RIP, OSPF

### ► User authentication

- Active Directory supported
- Active Directory groups integration
- OpenLDAP supported
- Local userdatabase
- Web-interface authentication (port changeable)
- Windows-client authentication
- Authentication on domain login
- Single sign on with Kerberos
- Single- and multi login
- Web-Landing-Page
- Login and logoff auditing
- User- and group statistics

### ► DHCP

- DHCP-relay
- DHCP-client
- DHCP-server (dynamic and fixed IP)

### ► DMZ

- Port forwarding
- PAT
- Dedicated DMZ-links
- DMZ-wizard
- Proxy supported (SMTP)

### ► VLAN

- Max. 4094 VLAN per interface possible
- 802.1q ethernet header tagging
- Combinable with bridging

### ► Bridge-mode

- OSI-layer 2 firewall-function
- Spanning tree (bride-ID, port-cost)
- Unlimited bridges
- Unlimited interfaces per bridge
- Combinable with VPN-SSL

### ► Traffic shaping

- Up- and download shapeable
- Multiple internet connection separately shapeable
- All services separately shapeable
- Maximum and guaranteed bandwidth adjustable
- QoS with TOS-flags supported
- QoS inside VPN connection supported

### ► Backup

- Remote backup creation
- Small backup files (kb)
- Remote backup restore
- Restore backup on installation
- Automatic and time based creation of backups
- Automatic upload of backups on FTP- or SCP-Server
- Auto-install-USB-stick with backup integrated

### ► SNMP

- SNMPv2c
- SNMP-traps
- Auditing of:
  - CPU / Memory
  - HDD / RAID
  - Ethernet-interfaces
  - Internet-connections
  - VPN-tunnel
  - Users
  - Statistics, Updates
  - DHCP
  - HA

### ► VPN

- VPN-wizard
- Certificate-wizard

#### IPSec

- Site-to-site
- Client-to-Site (Road warrior)
- Tunnel-Mode
- IKEv1, IKEv2
- PSK
- X.509-certificates
- 3DES, AES (128, 192, 256), Blowfish (128, 192, 256)
- DPD (Dead Peer Detection)
- NAT-T
- Compression
- PFS (Perfect Forward Secrecy)
- MD5, SHA1, SHA2 (256, 384, 512)
- Diffi Hellman group (1, 2, 5, 14, 15, 16,17,18)
- export to One-Click-Connection
- XAUTH, L2TP

#### SSL

- Site-to-site
- Client-to-Site (Road warrior)
- Routing-Mode-VPN
- Bridge-Mode-VPN
- X.509-certificates
- Multi-Gateway for SSL S2S (Failover)
- TCP/UDP port changeable
- Compression
- specify WINS- and DNS-servers
- 3DES, AES (128, 192, 256), CAST5, Blowfish
- Export to One-Click-Connection

#### PPTP

- Windows-PPTP compatible
- Specify WINS- and DNS-servers
- MSCHAPv2

#### X.509 certificates

- CRL
- OCSP
- Templates
- Multi CA support
- Multi host-cert. support

### ► VPN-client

- IPSec-client
- SSL-client (OpenVPN)
- NAT-T
- AES (128, 192, 256), 3DES
- CAST, Blowfish
- XAUTH
- X.509 certificates
- PSK
- One-Click-Connection
- Log-export

### ► Command center

- eGUI technology, ISO 9241 certified
- Monitor 500+ firewalls
- Active configuration of 500+ firewalls
- VPN connections centrally creatable
- Single- and group-backup
- Plan automatic backup in groups
- Single- and group update & licensing
- Create and apply templates on multiple firewalls
- Certificate based 4096 bit encrypted connections to the firewalls
- Display settings of all firewalls
- Role based command center user management
- VPN-monitoring