

S-64 E v2

Four-channel H.264 video encoder

Quick Start Guide



Find additional manuals, the datasheet, the EU Declaration of Conformity and the latest firmware for this product at:
<http://www.tkhsecurity.com/support-files>



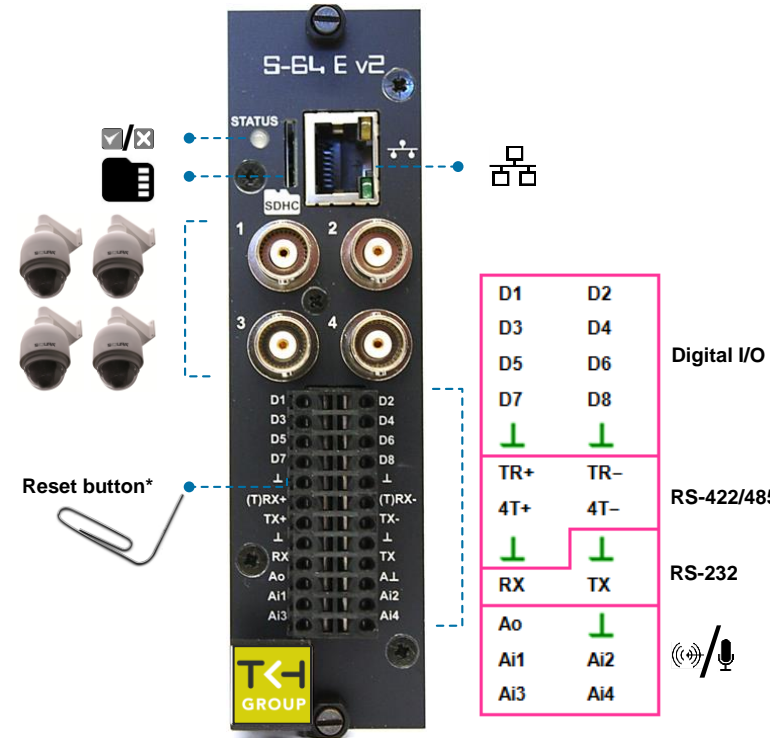
SECURITY SOLUTIONS

Unpack



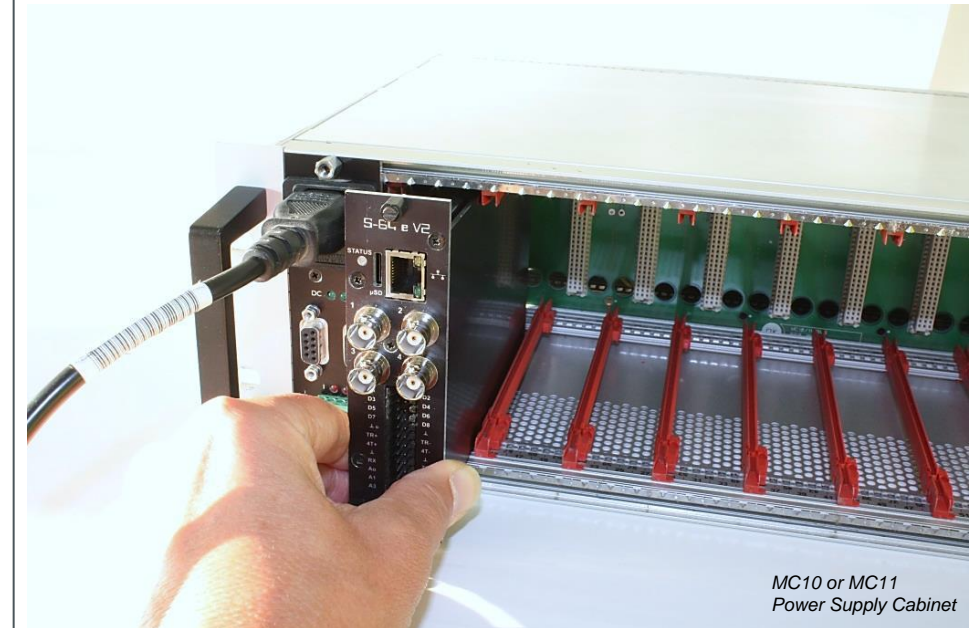
Note: Subject to modification. Actual product and accessories may differ in appearance.

Understand front panel



*Press and hold for 10 sec. to reset to factory defaults (incl. network settings)

Install

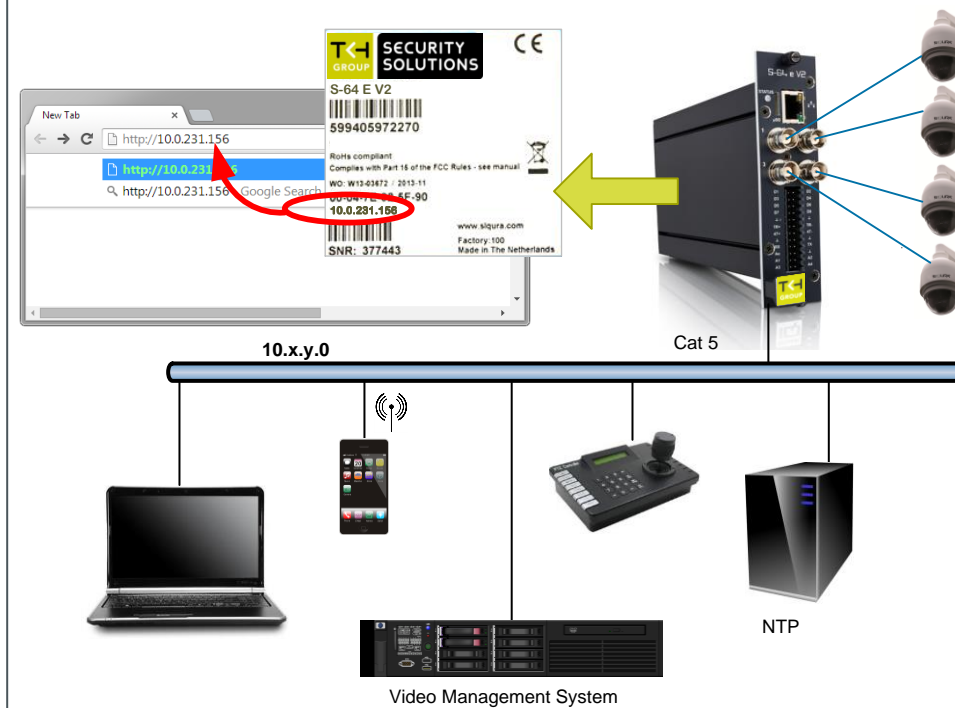


MC10 or MC11 Power Supply Cabinet

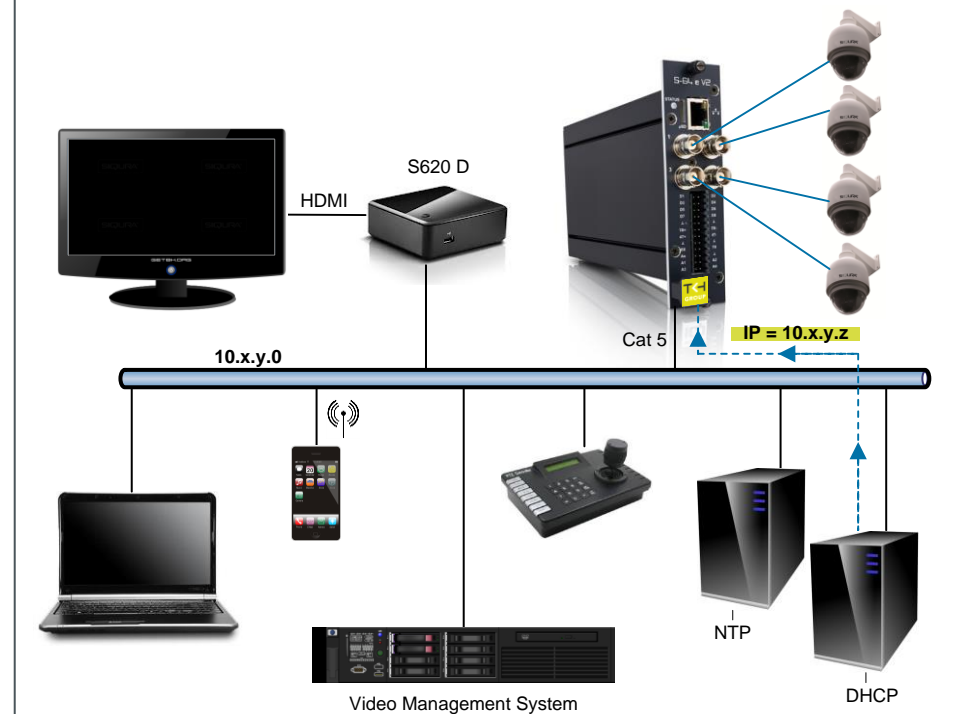
Connect



Access via factory-set IP address (default)



S-64 E v2 DHCP setting activated (optional)



Install Device Manager (optional)

1

2

3

support-files > Software > Siqura Device Manager

Access via Device Manager (optional)

1

2

View live stream in browser

Modify streaming profile

Modify image quality

View live stream in video player