

> PE3 and PE360 System Data Sheets



PE3

DESCRIPTION

All-in-one Parking Guidance System Smart Sensor with one or two IP Low Lux cameras and LED integrated lights. Each camera can control and monitor up to 3 spaces (6 spaces per unit with 2 cameras). The LED will be green while one or more spaces are available and red when all controlled spaces are occupied.

This is a stand alone unit with an internal processor for space occupancy detection. It is a unique video-based guidance system with real time video surveillance and video recording of all cameras at the same time. The low light camera sensor produce high quality images and provide the best LPR reliability even in poorly illuminated car parks. This video-based guidance system is also equipped with Real Dimmable Smart Lighting integration capabilities.

Camera Unit	PE3
PE3 - 0021	PE3 Sensor, single camera
PE3 - 0022	PE3 Sensor, dual camera
PE3 - 0023	PE3 Sensor, single camera, no LED
PE3 - 0024	PE3 Sensor, no camera, LED only



CAMERA UNIT PE3

Camera

Processor	Embedded ARM Cortex processor
Image sensor	CMOS
Resolution	2.0 Megapixels per camera
Sensitivity	Low Lux camera sensor customized for most car parks' light environments, Parking Guidance Solution algorithms and superb video surveillance
Low Temperature	Working mode protects the camera against overheating and ensures high reliability and high lifespan
Low power consumption	Only 3W for whole unit (double camera case + LED)
Video Protocols	MJPEG and special low band width protocol

LED Indicator

Technology	RGB LEDs
Special Functions	LED indicator with flashing in one or more colors to indicate alerts or special states (vehicle parked in reserved space, wrong parked, etc.)
Vision Angle	360°

Interfaces

Connectors	One and only RJ45 Standard connector per camera
Protocol	TCP/IP

Power

Power Supply	PoE (Power Over Ethernet). Optional: PoE+
Power Consumption	0021: 2w; 0022: 3w; 0007: 1w.
Certifications*	UL, CE, NOM

Environment

Working Temperature	-30°C to +60°C (-22°F to +122°F)
IP rating	IP65 rated (against water and dust)

CAMERA UNIT PE3

Mechanical

Mounting	Easy Plug & Play installation over conduit
Material	Polycarbonatew/ABS plastic
Dimensions (Height, Width, Depth)	100 mm (3.9"), 290 mm (11.4"), 200 mm (7.8")
Weight	0.6 kg (1.32 lbs)

PE360

DESCRIPTION

All-in-one Parking Guidance System Smart Sensor with one IP Low Lux camera and RGB LED integrated light. Each sensor controls up to 6 parking spaces (3 per side). The LED will be green while one or more spaces are available and red when all controlled spaces are occupied.

It is a unique video-based guidance system with 360° real time video surveillance and video recording of all cameras at the same time. The low light camera sensor produce high quality images even in poorly illuminated car parks. The PE360 sensor provides the highest level of security the parking industry has ever seen, with seamless guidance, and complete 360° surveillance.

Camera Unit	PE360
PE360 - 0025	PE360 Smart Sensor



CAMERA UNIT PE360

Camera

Processor	Embedded ARM Cortex processor
Image sensor	CMOS
Resolution	2.0 Megapixels
Sensitivity	Low Lux camera sensor customized for most car parks' light environments and tuned to produce high-quality images for Parking Guidance Solution algorithms and superb video surveillance
Low Temperature	Working mode protects the camera against overheating and ensures high reliability and high lifespan
Low power consumption	2,5W
Video Compression	H.264 and Mjpeg

LED Indicator

Technology	RGB LEDs
Special Functions	LLED indicator with flashing in one or more colors to indicate alerts or special states.
Vision Angle	360°

Interfaces

Connectors	One and only RJ45 Standard connector per camera
Protocol	TCP/IP

Power

Power Supply	PoE (Power Over Ethernet).
Power Consumption	2,5w
Certifications*	UL, CE, NOM

Environment

Working Temperature	-30°C to +60°C (-22°F to +122°F)
IP rating	IP65 rated (against water and dust)

CAMERA UNIT PE360

Mechanical

Mounting	Easy Plug & Play installation over conduit
Material	Polycarbonatew/ABS plastic
Dimensions (Height, Width, Depth)	95 mm (3.7"), 105 mm (4.1"), 105 mm (4.1")
Weight	0.25 kg (.55 lbs)

Server & Processor

DESCRIPTION

High performance server to control the entire PE3 and PE360 Solution. Superb processing power to run sophisticated Artificial Intelligence Algorithms. Ability to display images in real time from all PE3 and PE360 cameras on the project.

The rack mount server gathers information, transactions and images from all PE3 and PE360 cameras and devices. It controls LED displays and communications with other systems such as: Locate your Car system, PMS/PARCS system, outdoor sensors, etc. Additionally, it has a High storage capacity for video recording.



SERVER AND PROCESSOR

Hardware

CPU	Hexa Core Processor
RAM	32Gb DDR4
Network	2 x Gigabit Ethernet
Power Supply	High Efficiency
Format	Rack 19". 4U Height. Color: Black
SO	2 x 256GB SSD
Data Base Storage	HDD: 5 Years minimum. Cloud: Optional
Video Storage	4TB HDD: 24h of video-recording minimum.

Software

Operating System	Windows 10 Professional 64BIT
Database	Microsoft SQL Server (Only in 0253, 1 per project)

Power

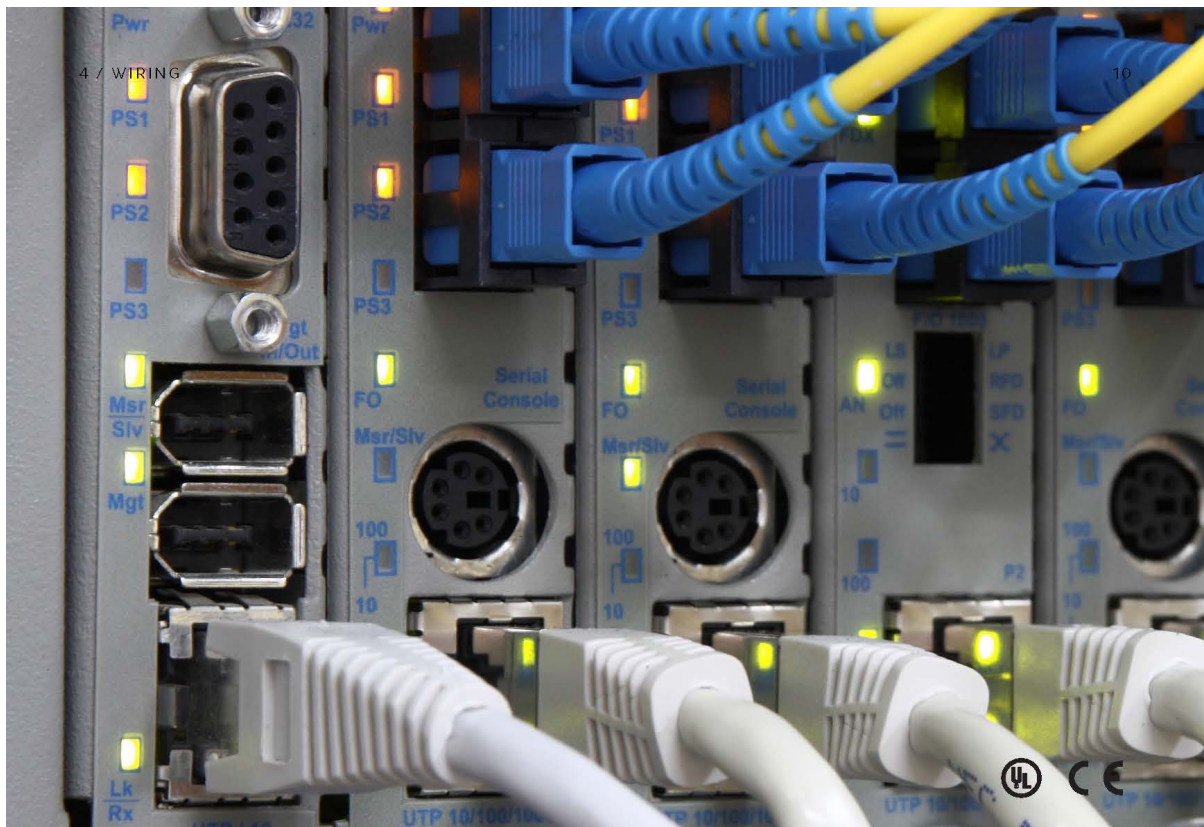
Power supply	110-230Vac
Power consumption	400W maximum
Certificates*	UL, CE, NOM

Wiring

DESCRIPTION

The PE3 and PE360 Solution uses high-quality data and power cables: 100% copper, LSZH and high conductivity.

The PE3 and PE360 cables have plug & play connectors for easy and fast installation. No metal alloy used, only 100% copper to guarantee best performance. All cables using LSZH directives, ensuring high safety in public spaces such as car parks (Halogen free and no flame spread).



WIRING

Data Cable

Conductive Material	100% polished copper Class 5
Type	UTP Cat5e. Optional: Cat6e.
Gauge	24AWG
Insulation Material	LSZH (Low Smoke Zero Halogen, Halogen free)
Resistance	8.9 ohms/100m at 20°C
Connector Type	RJ45
Certificates*	UL, CE

Power Electric Cable

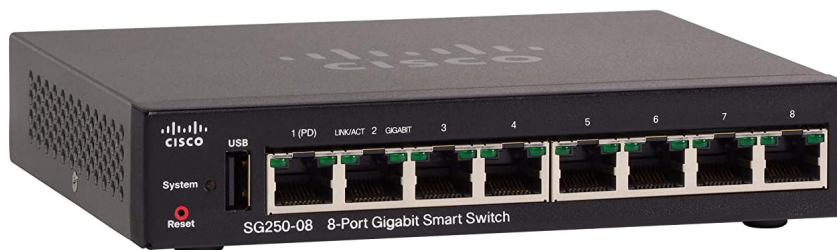
Conductive Material	100% polished copper Class 5
Type	Stranded
Gauge	1.50 mm ² or 2.50 mm ²
Insulation Material	LSZH (Low Smoke Zero Halogen, Halogen free)
Resistance	13.3 ohms / 1000m at 20°C.
Maximum voltage allowed	1KVolts
Certificates	UL, CE

Level 1 & 2 Switches

DESCRIPTION

The PE3 and PE360 Solution uses a communications network based on Cisco™ devices to ensure reliable and robust communications across all field equipment.

Cisco devices are deployed across the car park to connect the control center to the field equipment. All PE3 and PE360 Solution devices (cameras, LED displays, etc.) are Ethernet based and managed using the one communications network.



LEVEL 1 & 2 SWITCHES

Switch

Type	Switches layer 3 managed
Ports	10/100/1000 (Gigabit)
Number of Ports	Depending on the model (8 or 10 ports)
Backplane switching capacity	From 20 to 160 Gbps depending on the model

Power

Power Supply	110-230Vac
Certificates*	UL, CE, NOM

Certificates

Directives	UL (UL 60950), CSA (CSA 22.2), CE, FCC Part 15 (CFR 47) Class A
Standards	IEEE 802.3 10BASE-T Ethernet, IEEE 802.3u 100BASE-TX Fast Ethernet, IEEE 802.3ab 1000BASE-T Gigabit Ethernet, IEEE 802.3ad LACP, IEEE 802.3z Gigabit Ethernet, IEEE 802.3x flow control, IEEE 802.1D (STP, GARP y GVRP), IEEE 802.1Q/p VLAN, IEEE 802.1w RSTP, IEEE 802.1s STP, IEEE 802.1X, IEEE 802.3af, IEEE 802.3at.

Level 3 Communications Box

DESCRIPTION

The PE3 and PE360 Solution establishes a communications network based on premium devices to ensure robust and reliable communications with thousands of cameras and devices across the same network. All PE3 and PE360 Communication boxes are PoE to connect the cameras and indoor signs.

Communication devices are deployed across the car park to connect the control center to the field equipment. All PE3 and PE360 Solution devices (cameras, LED displays, etc.) are Ethernet based and managed using the one communications network.



LEVEL 3 COMMUNICATIONS BOX

Switch

Type	Switches unmanaged
Ports Speed	10/100 (Megabits)
Number of ports	Depending on the model (16 or 18 ports)
Backplane switching capacity	100Mbps
Input/Output TCP/IP Ports	1 Input/1 Output
PoE Ports	14 x 12VDC PoE for 0102, 0103, 0104 / 16 x 12VDC PoE for 0100

Power

Input	48VDC for 0100, 0102, 0103/24VDC for 0104
Output Supply	12VDC PoE
Certificates*	UL for 0104, NOM&CE for 0102

Environment

Working temperature	Industrial range -30°C to +60°C (-22°F to +140°F)
IP rating	IP65 rated (against water and dust)

Mechanical

Internal mounting	Grill mounting
Cabinet mounting	Wall/Ceiling/Over-tray mounting cabinet
Material	Polycarbonate/ABS plastic
Dimensions (Height, Width, Depth)	340 mm (13.4"), 460 mm (18.2"), 160 mm (6.3")
Weight	5.1 kg (11.3 lbs)

PARK EYES

Power Control Cabinet

DESCRIPTION

The PE3 and PE360 Solution uses a TCP/IP industrial power controller to turn on/off the system remotely when it is necessary.

The Power Control Cabinet controls up to 6 AC power lines. It uses contactors to control the AC lines and is programmable by software to turn off/on the system in accordance with a time schedule.



POWER CONTROL CABINET

Connectors

Input	1 x RJ45 TCP/IP Female Connector
Outputs	Up to 6 x AC lines control (depending on model)

Power

Input	110/220VAC Output Supply
Outputs	From 1 to 6 Contactors for AC lines (depending on model)
Certificates*	CE&NOM for 0150-0155 and UL for 0156- 0159

Environment

Working temperature	Industrial range -30°C to +70°C (-22°F to +158°F)
IP rating	IP65 rated (against water and dust)

Mechanical

Internal mounting	Grill/DIM-Rail mounting
Cabinet mounting	Wall/Ceiling/Over-tray mounting cabinet
Material	Polycarbonate/ABS plastic
Dimensions (Height, Width, Depth)	340 mm (13.4"), 460 mm (18.2"), 160 mm (6.3")
Weight	4.3 kg (9.5 lbs)

Conduit/Cable Tray

DESCRIPTION

The PE3 and PE360 Solution uses a cable tray to hold all cables and camera units. A “C” hanger speeds up the installation time since the cable is not needed to be stitched in each hanger, only drop and run.



Cable Tray



Ceiling Bracket



Table Tray Connector



Table Tray Connector - 90°



Table Tray Connector - T Junction



Table Tray Connector - x Junction

CONDUIT/CABLE TRAY

Material

Material	Powder Painting Steel Surface or Aluminum (Depending on Version).
Protection and resistance to corrosion	Galvanized Sendzimir in compliance with UNE-EN 10142 standard in compliance with UNE-EN 61537 product standard. (Optional). Zinc protection adequate for indoor installations.
Optional	Hot-dipped galvanized in compliance with UNE-EN ISO 1461. Appropriate for outdoor installations and aggressive environments.

Technical Characteristics

Impact resistance	System with impact resistance of up to 20J
Electrical continuity	The system provides electrical continuity, in compliance with UNE-EN 61537, that ensures equipotential connection
Fire performance	Completely free of fire-related risks, fire spreading risks, toxic or opaque emission. Classified as non-flammable, M0 according to the Basic Building Standard NBE-CPI/96 and as A1 according to the Technical Building Code

Mechanical

Dimensions (Height, Width, Length)	50 mm (1.97"), 30 mm (1.18"), 3000 mm (9,85' ft)
Thickness	0,8mm for the Painted Galvanized Steel option and 1,2mm for the aluminum option

Certificates

Directives	UL, CE mark in compliance with Low Voltage Directive 006/95 CE. Compliance with EN-61537 standard
Standard(s) for Safety	NFPA 70, NEMA VE1 METAL CABLE TRAY SYSTEMS
RoHS	CrVI -free finish in compliance with Directive 2002/95/CE RoHS

PARK EYES

Power Supply Cabinet

DESCRIPTION

The PE3 and PE360 Solution uses high-efficiency Power Supplies of premium brands. The PE3 and PE360 Solution features an industrial temperature range for main power supplies. Its BUS power supply meets with low voltage safety directives. Up to 100 cameras can be powered with only 1 power supply cabinet and up to 600 with 6 power supply cabinets.



POWER SUPPLY CABINET

Power

Power supply input	110-230Vac
Power output	Up to 6 x 240W, 48Vdc each for: 0150, 0151, 0152, 0153, 0154 and 0155 Up to 6 x 480W, 24Vdc each for: 0156, 0157, 0158, 0159, 0160 and 0161
Certificates*	CE&NOM for 0150-0155 and UL for 0156- 0159

Environment

Working temperature	Industrial range -30°C to +60°C (-22°F to +140°F)
IP rating	IP54 rated (against water and dust)

Efficiency

Continuous current up to +60°C	+10% (5.4A)
Continuous current up to +45°C	+20% (6A)
Efficiency	Up to 95.5%
Safe hiccup	Overload Mode
Others	Active Power Factor Correction (PFC) Full Power Between -25°C and +60°C Minimal Inrush Current Surge DC-OK Relay Contact

Mechanical

Internal mounting	DIN Rail power supplies
Cabinet mounting	Wall mounting cabinet
Material	Polycarbonate/ABS plastic
Dimensions (Height, Width, Depth)	610 mm (24.0"), 448 mm (17.6"), 160 mm (6.3") Weight
Weight	0150: 4.5Kg; 0151: 5.2Kg; 0152: 8,5Kg; 0153: 9.2Kg; 0154: 9.9Kg; 0155: 10.5Kg

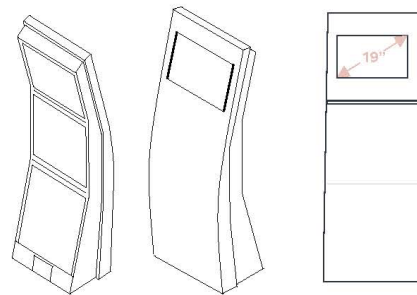
Locate Your Car Kiosk

DESCRIPTION

The touch screen information point kiosk is used to Locate Your Car easily by typing the plate number on the screen. The kiosk will show the car image in real time, the exact position in the parking lot and the way to find the car. Mobile Find Your Car APPs are optional.

The kiosk can incorporate unique 3D images of the parking lot map. Real-time video of the car is displayed. Optional embedded modules are available, such as Mifare card reader and barcode tickets reader, to speed up car location. This allows full integration with third-party Kiosks, Information points or Pay on Foot Machines.

IMPORTANT: This is an optional item only for PE3 sensors only.



LOCATE YOUR CAR KIOSK

Hardware

Screen	LCD 19" 16:9 Wide DVI touch screen. GloTouch
Embedded Computer	i3 or Higher
Disk	With SSD disk (Solid State Disk)
Communication port	TCP/IP
UPS	UPS 400VA mandatory (not included)
Optional	Mifare/Barcode ticket reader module

Software

Operating System	Windows 10
------------------	------------

Power

Power supply	110-230Vac.
Power consumption	200W maximum
Certificates*	CE, NOM

Environment

Working temperature	0 to 60°C
Protections	Ruggedized computer
Ventilation	Fan less

Mechanical

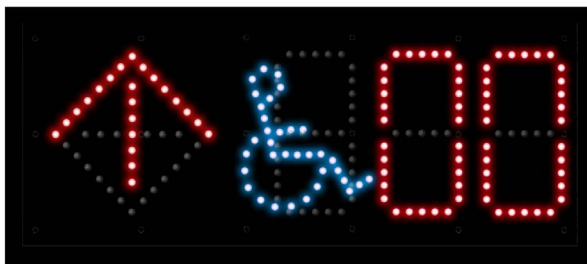
Mounting	Designed for indoor use only
Motorized parts	No mechanical/motorized parts
Case protection	Made of powder coated steel. IP54
Access Doors	Three rear doors giving easy maintenance access
Dimensions	1445 mm (56.9"), 490 mm (19.3"), 301 mm (11.85") Weight 32 Kg
Mounting	Attached to floor

Indoor 3 Digit LED Display

DESCRIPTION

The indoor LED Displays feature 7 segments, 3 digits, direction arrows and the handicapped symbol to guide drivers to available spaces.

These unique LED Displays for car park guidance offer multi-message functionality. Each display can show up to 4 different messages alternately, each for X seconds (configurable). This feature is very useful in an intersection of corridors, since only one display is needed instead of two or more, as in traditional panels. Made with RGB high brightness LEDs 7 configurable colors are available. Power over Ethernet (PoE) for easy plug and play.



LED Display	
Features	3 digits + arrow (four directions: up, down, right, left) + handicapped symbol. Different configurations are available
Processor	Internal microcontroller
Technology	RGB LEDs
Colors	7 available colors: red, green, blue, amber, light blue, violet and white
Characters height	130 mm (5.1")
Screen area	432 mm x 179 mm (17" x 7")
Special functions	Multi-message function. For example: standard free spaces in 3 directions + handicapped free spaces in 3 directions
Low Power consumption	Less than 8W for whole unit
Interfaces	
Connectors	Only one RJ45 Standard connector. No more connectors needed
Protocol	TCP/IP
Power	
Power supply	PoE (Power Over Ethernet)
Power consumption	6W maximum
Certificates*	CE, NOM
Environment	
Working Temperature	-40°C to +70°C (-40°F to +158°F)
IP rating	IP54 rated (against water and dust)
Mechanical	
Mounting	2 x M8 threaded inserts on top
Cabinet	Rear door with key for easy maintenance
Material	Polycarbonate/ABS plastic + powder coated steel
Dimensions (Height, Width, Depth)	484 mm (19"), 224 mm (8.8"), 100 mm (3.94")
Weight	4.6 kg (10 lbs)

Indoor 5 Digit Half Matrix Display

DESCRIPTION

The PE3 and PE360 Indoor LED Display for car park guidance can show up to 4 digits, direction arrows and different symbols (electric cars, families, pregnant women, elderly people and disabled drivers).

- LED Display with multi-message function for car park guidance.
- Made of high brightness RGB LEDs.
- Power over Ethernet (PoE) Display for easy plug and play.
- It can show 5 different special symbols, direction arrows, numbers and letters.



LED Display	
Features	4/5 digits or 3 digits + direction arrow or 2 digits + direction arrow + special symbol
Processor	Internal microcontroller
Technology	High brightness RGB LEDs
LEDs Array Size	160 x 526 mm (6,30" x 20,7")
Screen area	177 x 565 mm (6,96" x 22,24")
Symbols	Numbers, letters, arrows, electric cars, families, pregnant women, elderly people and disabled people
Low Energy Consumption	7W maximum for the whole unit
Interfaces	
Connectors	RJ45 standard connector
Protocol	TCP/IP
Power	
Power supply	PoE (Power Over Ethernet)
Power consumption	7W maximum
Certificates*	CE, NOM
Environment	
Working Temperature	-40°C to +70°C (-40°F to +158°F)
IP rating	IP54 rated (against water and dust)
Mechanical	
Mounting	2 x M8 threaded rods fixed on the top
Cabinet	Rear door with key for easy maintenance
Material	Polycarbonate/ABS Plastic + Powder coated steel
Dimensions (Height, Width, Depth)	615 x 225 x 100 mm (24'21" x 8'86" x 3'94")
Weight	4.6 Kg (15.21 lbs)

Outdoor 5 Digit Half Matrix LED Display

DESCRIPTION

This Outdoor LED signaling display or directory shows the number of parking spaces available on each level. Single exterior signaling panels show special parking spaces: For electric vehicles, families, expectant mothers, elderly people, disabled spaces, etc.

- Display is customized depending on each project's specific requirements.
- Made with high brightness RGB LEDs.
- Up to 5 digits per panel.
- Up to 5 special symbols, arrows, cross and letters.



LED Display	
Characteristics	Up to 5 digits per row. Optional: Number of required rows
Processor	Internal microcontroller
Technology	High brightness RGB LEDs
LEDs Array Size	160 x 526 mm (6,30" x 20,7")
Screen area	177 x 565 mm (6,96" x 22,24")
Symbols	Numbers, letters, arrows, crosses, electric vehicle, family, expectant mothers, elderly and disabled
Low Energy Consumption	Less than 25W for each row (max. power)
Interfaces	
Connectors	Standard RJ45 data connector and 12VDC power input for 1914 and 1915 88-264VAC power input for 1212 and 1213 AC/DC converters
Protocol	TCP/IP
Power	
Power supply	12VDC. To be connected to 1212 or 1213 AC/DC converters depending on the number of 1914 or 1915 signs.
Energy consumption	Less than 25W for each row (max. power) per 1212 or 1213 device.
Certificates*	UL, CE
Environment	
Working Temperature	-40°C to +70°C (-40°F to +158°F)
IP rating	1914: IP65 classified (valid for outside use)
Mechanical	
Cased panel assembly	2x M8 screws inserted in the upper, lateral and lower part
OEM panel assembly	Inside of a personalized case
Cabin assembly	Back door with key to insure easy maintenance for cased version
Cased panel material	Covered steel
Dimensions	Dependant on the final design and number of rows
Dimensions of each cased line	615 x 225 x 100 mm (24'21" x 8'86" x 3'94")
Weight	Dependant on the final design and number of rows
Weight of each cased row	1914: 4.6Kg; 1915: 1Kg;

PART NUMBER

Camera Unit PE3

PART NUMBER 0021:	PE.CAM.3.0.V3.SINGLE.SV (PE3 Sensor - Single Camera)
PART NUMBER 0022:	PE.CAM.3.0.V3.DOUBLE.SV (PE3 Sensor - Dual Camera)
PART NUMBER 0023:	PE.CAM.3.0.V3.SINGLE.SV.W/O.LED (PE3 Sensor - Single Camera, No LED)
PART NUMBER 0024:	PE.CAM.V3.W.LED.W/O.CAM (PE3 Sensor - LED Only, No Camera)

Camera Unit PE360

PART NUMBER 0025:	PE.CAM.360.V3 (PE360 Smart Sensor)
---------------------	------------------------------------

Server and Processor

PART NUMBER 0253:	PE.SERVER.SERV.R32.D04 (PE3 Server)
PART NUMBER 0272:	PE.SERVER.PROC.R32.D04 (PE3 Add On Storage & Processor Server)
PART NUMBER 2120:	DISK.HDD.4TB (Hard Disk Drive - 4TB)
PART NUMBER 2141:	DISK.HDD.12TB (Hard Disk Drive - 12TB)

Wiring - Data Cable

PART NUMBER 1603:	PE.CABLE.UTP.CAT5E.LSZH. METERS (Data Cable UTP Cat5e per meter)
PART NUMBER 1604:	PE.CABLE.UTP.CAT5E.LSZH. PC3M (Data Patch Lead UTP Cat5e - 3m)
PART NUMBER 1605:	PE.CABLE.UTP.CAT5E.LSZH. PC6M (Data Patch Lead UTP Cat5e - 6m)
PART NUMBER 1606:	PE.CABLE.UTP.CAT5E.LSZH. PC9M (Data Patch Lead UTP Cat5e - 9m)
PART NUMBER 1622:	PE.CABLE.UTP.CAT5E.LSZH. PC12M (Data Patch Lead UTP Cat5e - 12m)
PART NUMBER 1623:	PE.CABLE.UTP.CAT5E.LSZH. PC15M (Data Patch Lead UTP Cat5e - 15m)
PART NUMBER 1624:	PE.CABLE.UTP.CAT5E.LSZH. PC20M (Data Patch Lead UTP Cat5e - 20m)
PART NUMBER 1607:	PE.CABLE.UTP.CAT5E.LSZH. PC25M (Data Patch Lead UTP Cat5e - 25m)
PART NUMBER 1608:	PE.CABLE.UTP.CAT5E.LSZH. PC35M (Data Patch Lead UTP Cat5e - 35m)
PART NUMBER 1609:	PE.CABLE.UTP.CAT5E.LSZH. PC50M (Data Patch Lead UTP Cat5e - 50m)
PART NUMBER 1630:	PE.CABLE.UTP.CAT6E.LSZH. METERS (Data Cable UTP Cat6e per meter)
PART NUMBER 1631:	PE.CABLE.UTP.CAT6E.LSZH. PC3M (Data Patch Lead UTP Cat6e - 3m)
PART NUMBER 1632:	PE.CABLE.UTP.CAT6E.LSZH. PC6M (Data Patch Lead UTP Cat6e - 6m)

PART NUMBER

Wiring - Data Cable

PART NUMBER 1633:	PE.CABLE.UTP.CAT6E.LSZH. PC9M (Data Patch Lead UTP Cat6e - 9m)
PART NUMBER 1634:	PE.CABLE.UTP.CAT6E.LSZH. PC12M (Data Patch Lead UTP Cat6e - 12m)
PART NUMBER 1635:	PE.CABLE.UTP .CAT6E. LSZH.PC15M (Data Patch Lead UTP Cat6e - 15m)
PART NUMBER 1636:	PE.CABLE.UTP.CAT6E.LSZH. PC20M (Data Patch Lead UTP Cat6e - 20m)
PART NUMBER 1637:	PE.CABLE.UTP.CAT6E.LSZH. PC25M (Data Patch Lead UTP Cat6e - 25m)
PART NUMBER 1638:	PE.CABLE.UTP.CAT6E.LSZH. PC35M (Data Patch Lead UTP Cat6e - 50m)
PART NUMBER 1639:	PE.CABLE.UTP.CAT6E.LSZH. PC50M (Data Patch Lead UTP Cat6e - 50m)

Wiring - Power Bus Electric Cable

PART NUMBER 1602:	PE.CABLE.DC.2x1.5mm2.LSZH.W/o/SHIELD.METERS (Power Cable per meter 2 x 1.5mm (Unshielded))
PART NUMBER 1600:	PE.CABLE.AC.3x1.5mm2.LSZH.W/SHIELD.METERS (AC Power Cable per meter 3 x 1.5mm (Shielded))
PART NUMBER 1601:	PE.CABLE.AC.3x1.5mm2.LSZH.W/o/SHIELD.METERS (AC Power Cable per meter 3 x 1.5mm (Unshielded))

Level 1 & 2 Switches

PART NUMBER 0201:	PE.CAB.NET.SG100 (Data Cabinet - Unmanaged Switch 8 Port)
PART NUMBER 0200:	PE.CAB.NET.SG250 (Data Cabinet - Managed Switch 8 Port)
PART NUMBER 1303:	PE.SWI.SG350.10P (Core Switch)

Level 3 Communcations Box

PART NUMBER 0100:	PE.CAB.SC.2.2.SWPoE1.0 (Secondary Cabinet - Inc Switch 16 PoE Ports)
PART NUMBER 0102:	PE.CAB.SC.2.2 (Secondary Cabinet - Cisco Switch 14 PoE Ports)
PART NUMBER 0103:	PE.CAB.SC.2.2.HIGH.TEMP (Secondary Cabinet - Inc Switch 14 PoE Ports (High Temp))
PART NUMBER 0104:	PE.CAB.SC.2.2.UL (Secondary Cabinet - Cisco Switch 14 PoE Ports (UL))

PART NUMBER

Power Control Cabinet

PART NUMBER 0204:	PE.CAB.ADAM.1.CONTACTOR.12VDC (Power Control Cabinet - 1 Channel)
PART NUMBER 0210:	PE.CAB.ADAM.2.CONTATOR.12VDC (Power Control Cabinet - 2 Channel)
PART NUMBER 0211:	PE.CAB.ADAM.3.CONTATOR.12VDC (Power Control Cabinet - 3 Channel)
PART NUMBER 0212:	PE.CAB.ADAM.4.CONTACTOR.12VDC (Power Control Cabinet - 4 Channel)
PART NUMBER 0213:	PE.CAB.ADAM.5.CONTATOR.12VDC (Power Control Cabinet - 5 Channel)
PART NUMBER 0214:	PE.CAB.ADAM.6.CONTATOR.12VDC (Power Control Cabinet - 6 Channel)

Conduit/Cable Tray

PART NUMBER 1700:	PE.TRAY.50X30. NL.GAL-VA.COATED (Cable Tray 1m 50mm x 30mm)
PART NUMBER 1710:	PE.TRAY.50X30.AI (Cable Tray 1m 50mm x 30mm Al)
PART NUMBER 1701:	PE.TRAY.50X30.NL.GAL-VA.COATED. CEILING.BRACKET (Ceiling Bracket)
PART NUMBER 1711:	PE.TRAY.50X30. AI.CEILING.BRACKET (Ceiling Bracket Al)
PART NUMBER 1702:	PE.TRAY.50X30. NL.GAL-VA.COATED. CONNECTOR (Cable Tray Connector)
PART NUMBER 1712:	PE.TRAY.50X 30.AI. CONNECTOR (Cable Tray Connector Al)
PART NUMBER 1703:	PE.TRAY.50X30. NL.GAL-VA.COATED. BEND.90 (Cable Tray Connector - 90°)
PART NUMBER 1713:	PE.TRAY.50X30. AI.BEND.90 (Cable Tray Connector - 90° Al)
PART NUMBER 1704:	PE.TRAY.50X30. NL.GAL-VA.COATED.TCROSS.3-ARMS (Cable Tray Connector - T Junction)
PART NUMBER 1714:	PE.TRAY.50X30. AI.TCROSS.3-ARMS (Cable Tray Connector - T Junction Al)
PART NUMBER 1705:	PE.TRAY.50X30. NL.GAL-VA.COATED. CROSS.4-ARMS (Cable Tray Connector - X Junction)
PART NUMBER 1715:	PE.TRAY.50X30. AI.CROSS.4-ARMS (Cable Tray Connector - X Junction Al)

Power Supply Cabinet

PART NUMBER 0156:	PE.CAB.PC.1F.UL (Power Cabinet - 1 x 24V UL)
PART NUMBER 0157:	PE.CAB.PC.2F.UL (Power Cabinet - 2 x 24V UL)
PART NUMBER 0158:	PE.CAB.PC.3F.UL (Power Cabinet - 3 x 24V UL)

PART NUMBER

Power Supply Cabinet

PART NUMBER 0159:	PE.CAB.PC.4F.UL (Power Cabinet - 4 x 24V UL)
PART NUMBER 0150:	PE.CAB.PC.1F (Power Cabinet - 1 x 48V)
PART NUMBER 0151:	PE.CAB.PC.2F (Power Cabinet - 2 x 48V)
PART NUMBER 0152:	PE.CAB.PC.3F (Power Cabinet - 3 x 48V)
PART NUMBER 0153:	PE.CAB.PC.4F (Power Cabinet - 4 x 48V)
PART NUMBER 0154:	PE.CAB.PC.5F (Power Cabinet - 5 x 48V)
PART NUMBER 0155:	PE.CAB.PC.6F (Power Cabinet - 6 x 48V)

Locate Your Car Kiosk

PART NUMBER 2001:	PE.FYC.TOTEM.IP54 (Find Your Car Kiosk - IP54)
PART NUMBER 2006:	PE.FYC.TOTEM.IP54.LECTOR.CB (Find Your Car Kiosk - IP54 (with Barcode Reader))

Indoor 3 Digit LED Display

PART NUMBER 1913:	PE.LD.INDOOR.D8.3D.1A.1H (Indoor LED Sign with Enclosure - 130mm)
-------------------	---

Indoor 5 Digit Half Matrix Display

PART NUMBER 1918:	PE.LD.INDOOR.HM.3D.1FM (Indoor LED Sign with Enclosure - 170mm)
-------------------	---

Outdoor 5 Digit Half Matrix LED Display

PART NUMBER 1212:	PE.PS.POWERSUPPLY.MW.IN220.OUT12.P100W (Outdoor Sign Power Supply - 100W)
PART NUMBER 1213:	PE.PS.POWERSUPPLY.MW.IN220.OUT12.P150W (Outdoor Sign Power Supply - 150W)
PART NUMBER 1914:	PE.LD.OUTDOOR.HM.3D.1FM (Outdoor LED Sign with Enclosure - 170mm)
PART NUMBER 1915:	PE.LD.OUTDOOR.HM.3D.1FM.W/o/HOUSING (Outdoor LED Display without Enclosure - 170mm)

CERTIFICATION

*Conforms to CSA C22.2 No. 60950-1 and UL 60950-1

Certificate





tkhsecurity.com

Our Brands:



© 2021, TKH Security.