

> PE360 Smart Sensor PGS



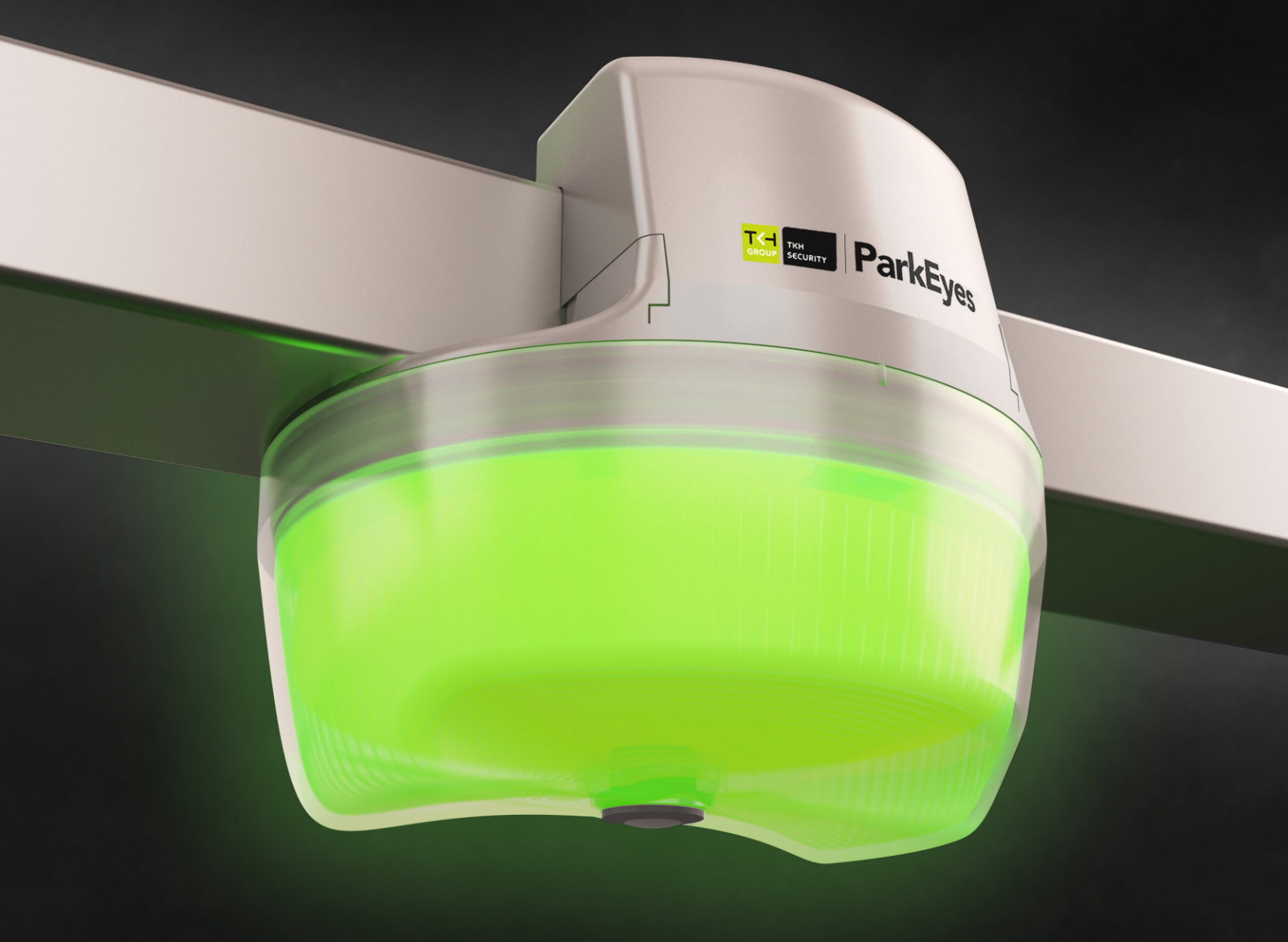
ParkEyes

Our PE360 PGS:

Unprecedented sitewide surveillance and advanced parking guidance in one innovative installation.

The PE360 provides the highest level of security the parking industry has ever seen, with seamless guidance, and complete 360° surveillance. Leveraging our camera-based technology, the PE360's bright LED indicator can be configured to display several colors to indicate occupancy status and parking space type. (i.e. regular, premium, handicapped, etc.) Utilizing industry-leading technology, this latest innovation combines the advantages of traditional parking guidance with state-of-the-art surveillance at the price point of ultrasonic sensors.





The only camera-based PGS that offers 360° sitewide surveillance.



Parking technology built for state-of-the-art guidance and surveillance.

As parking facility owners move away from traditional single-space sensor systems, more and more, they are turning to high-tech offerings that help elevate the customer experience (CX), increase garage security and enhance the overall brand. However, this typically comes with a significant jump in the price point of the system. Our PE360 PGS not only provides enhanced functionality and exceptional surveillance, but it does so at a comparable cost with the low-tech ultrasonic parking guidance solutions of the past.

With the invention of the camera based sensor, the PE360 system has the ability to stream images, video and data to the core server for variety of purposes – including real-time occupancy monitoring.

The PE360 system incorporates vehicle sensing, high-tech guidance, and sitewide surveillance throughout the garage. These sensors, designed with a 360° field of vision, have complete visibility of the garage. Each individual sensor has the ability capture and stream video and images to our proprietary management system, while also collecting rich occupancy and per bay data points to help increase garage efficiency.

**Simple installation,
lightweight infrastructure,
elegant design.**

The streamlined layout of an installed PE360 system is as functional as it is aesthetically pleasing. PE360 sensors, including a single camera and lighting, are installed above the driving lane to monitor spaces on each side. This unique vantage point provides the IP-based cameras with an unobstructed view of the parked vehicles – while providing parkers with clear sight lines for easy guidance and navigation.

At a price point competitive with low-tech ultrasonic systems, our PE360 camera-based PGS provides all the advantages of ultrasonic guidance with easier installation, lighter infrastructure, and a sitewide surveillance system — as its camera-based sensors continually gather video and images to enhance the safety and security of the parking facility.

As a result, the PE360 system can provide parking facility owners with the camera-based PGS benefits of CX-enhancing parking guidance — and a sophisticated security system — within a single installation.

**The highly accurate parking
guidance at its core.**

A single-camera PE360 can monitor up to 6 parking bays. The sensor’s bright LED indicator glows green if vacancy is detected in one or more monitored spaces, while several other colors can be programmed to denote special-purpose spaces: i.e. blue for a handicapped space, purple for a premium space, etc.

The standalone PE360 sensors continually feed video information from the bays to the system’s central server/database. This is used to update indoor and outdoor LED digital signage, providing parkers with up-to-the-minute occupancy information in order to quickly find an open space.

**The added benefit of 360°
video surveillance.**

In addition to empowering the system’s core parking guidance function, the camera-based PE360 sensors keep a continual watch on the entire facility, in all directions at any given time. These cameras capture real-time video 24/7 across the facility, self-adjusting for all types of lighting conditions, to produce

high quality images and streaming video. As a result, a PE360 system can simultaneously function as a sophisticated surveillance system.

One that can also see the areas in and around the bays themselves — areas where theft, vandalism and collision events often occur.

Facility reports to help with decision-making.

With the PE360 parking guidance system, facility owners and operators can also access several reports on occupancy, dwell time, and turnover within the facility. Owners and operators can leverage these reports, which can be exported to Excel format, to get a better handle on what's happening at specific times and over the long haul.

An economical PGS with modular installation: Simple to service down the road.

The installation of competing ultrasonic systems typically require a complete shutdown of the parking facility. Which immediately translates to lost income. By contrast, the PE360 camera-based PGS can be easily installed, with little disruption and minimal effect on daily operations. The quick and efficient installation of the PE360 solution significantly reduces facility down time and implementation cost. The

intelligent placement of the high-resolution digital cameras also leads to savings with the ability to monitor up to six spaces with one unit, minimizing the need for additional infrastructure.

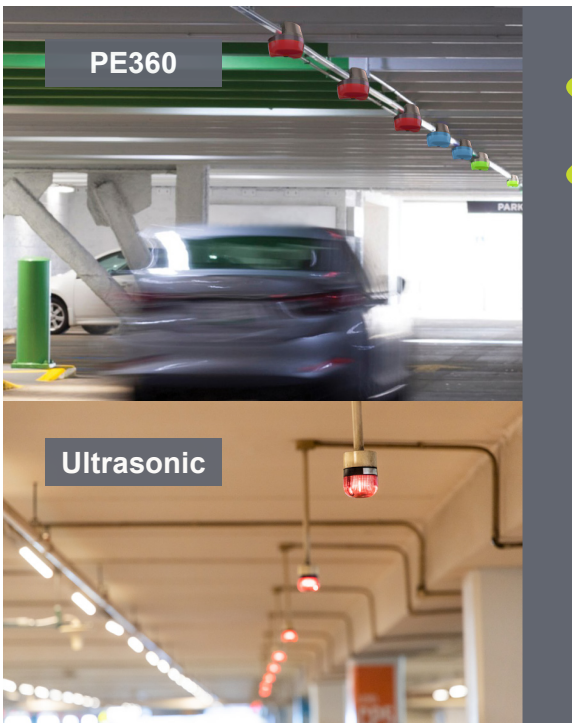
You'll also be backed by the industry-leading service and support of your local partner to assist in system maintenance, troubleshooting and optimization, to help keep your customers' PE360 systems in top working condition for the long haul by maximizing performance and long-term utility.

Heightened security for owners, operators, and parkers.

Unlike many camera-based parking guidance systems, the PE360 does not utilize license plate recognition (LPR) technology to monitor the facility.

Relying solely on the camera-based sensors to surveil and record occupancy data, this completely secure monitoring method ensures that parkers' privacy is protected, so they can feel safe knowing their vehicles are being recorded throughout the facility without any concern that their private license plate information is being tracked, stored, or misused in any way. Keeping both customers and your parking facility safer than ever before.





Why the PE360 Smart Sensor PGS over Ultrasonic:

There is really no comparison between a camera based PE360 Smart Sensor PGS and one using outdated ultrasonic technology. With the added security of built in surveillance, our customized guidance-and-beyond solution heightens performance – while elevating the overall parker experience.

	Ultrasonic	PE360	Superior Product
LED Capabilities	2 colors per unit (red/green or blue/green)	RGB-based signaling lights can be remotely changed to virtually any color.	PE360
Parker Experience	Basic guidance and wayfinding only.	Next-generation guidance includes our seamless wayfinding continuum.	PE360
Installation Ease	A complex installation that requires complete shutdown of the parking facility.	Installed quickly, section by section, with no disruption and minimal effect on daily operations.	PE360
System Look-and-Feel	Cluttered two-conduit design impairs visibility. Requires substantially more conduit/wire for a comparable installation.	Modern streamlined single conduit design with superior sight lines. Installed with a minimized amount of conduit/wires.	PE360
System Upgrades	Outmoded technology with no significant upgrades available.	Software-based system with steady stream of upgrades. Future Artificial Intelligence and video analytic upgrades will further enhance the system.	PE360
Security	No surveillance features.	360° sitewide surveillance with the ability to view, capture, and store video & images.	PE360



Our Seamless Wayfinding Continuum:

The quality and customer-friendliness of a parking facility are often overlooked at many properties. However, the parking experience can be used to elevate the first impression for valued guests and visitors, to set their expectations for the remainder of the visit, and to enhance a property's overall brand-building strategy.

Our approach to guidance is to remove all stress and uncertainty from the process. The overarching goal is to provide a seamless and stress-free experience for each parker – from initial entry to an open space – while improving overall traffic flow throughout a facility or across an entire property.

Next-generation guidance at every key decision point.

Through the unique synergy of our camera based PE360 system and customizable wayfinding signage, parkers are treated to a higher level of guidance and convenience from the moment they arrive – along with valuable follow up guidance at every key decision point.



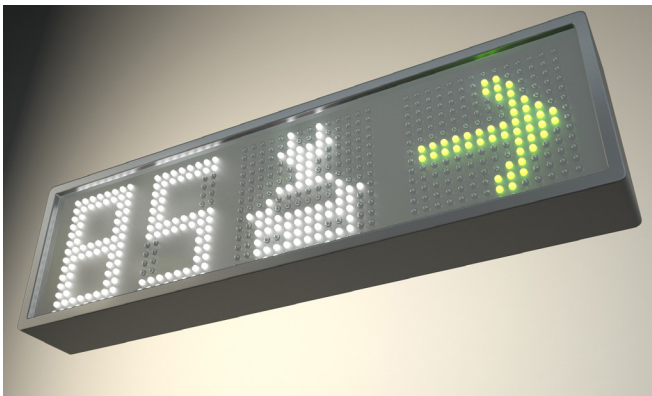
Signs upon arrival:

For properties with multiple parking areas, a multi-facility sign announces the number of available spaces at each garage or lot. This continually updated information enables parkers to decide on the best facility to park in at any given moment.



Secondary signage within a chosen garage:

Once a parker has decided to park in a specific garage, a dedicated sign displays the number of available spaces on each level.



Directional interior in-aisle pointers:

Once a parker has committed to searching for a space on a particular level, these signs enable a parker to make on-the-spot decisions (left, right or straight) based on the number of available spaces.



Signaling color-coded LEDs on the smart-sensors:

This is where the PE360s – which have been providing up-to-the-second occupancy data to the core system all along – really kick in to finish the wayfinding process. In addition to green (vacant) and red (occupied), these bright, clearly viewable LED indicators can be programmed to display a variety of colors to denote special-purpose spaces – i.e. blue for handicapped, purple for premium, and so forth.

The innovation hub for advanced-tech guidance-and-beyond technology.

Today, more and more facility owners are tapping into the guidance-and-beyond benefits of a customized installation powered, enhanced, and controlled by smart softwares.

Enhanced performance with our intelligent software system.

The PE360 software suite empowers owners and operators to continuously monitor the facility down to each bay. With the ability to add and remove specific users and functionality, our software enables you to customize and control your system.



Increasing garage efficiency with data-driven reporting.

Offering data on occupancy, dwell time, transitions, and heatmaps indicating which areas are affected by over and under utilization, the reports featured in the PE360 software suite provide valuable information that can be compared and used in a myriad of ways to improve the facility's operational efficiency and plan for future utilization. These reports can also be exported into excel so they can be customized to suit the needs of varied members within your executive and operations team.

Live maps for real-time system monitoring and control.

The PE360s live maps feature enables access to real-time parking bay images, bay status, and live image playback, so operators can quickly and easily understand how their facility is being used. Additionally, this feature enables operators to set the LED colors of each sensor, designating parking space types (i.e. regular, premium, handicap) that can be adapted to the needs of the facility, without fixed barriers.

Keeping a watchful eye on your facility: In a way other systems can't.

Our video surveillance feature provides instant access to all video collected by each sensor. Users can easily select which camera or camera groupings to view, with the ability to monitor all cameras in the facility at any given time. All video can be streamed live, played back, or extracted and saved. The streaming

video and data captured by the PE360s can be used in a variety of ways. It is a powerful combination of evidence for scenarios where a theft or assault has occurred. It can also help protect owners and management against fraudulent claims of theft and vandalism, while helping to deter the intrusion of unwelcome visitors. For parkers, this also provides an added measure of safety, security, and peace-of-mind.

Maximized usage through next-gen guidance. For new and existing facilities.

Without parking guidance technology, it's common for parking spaces to go unused during high-occupancy periods. With the PE360 system parkers are quickly and efficiently led to open spaces throughout a facility. Our next-generation parking guidance solution is crucial for obtaining maximum usage per square foot. This can save millions in construction costs for a new facility. It can also postpone or eliminate the need to expand or replace an existing facility.

A next-generation technology platform: Always ready for the next plateau.

At TKH Security, business intelligence is more than a concept. Parking technology is about far more than guidance.

For more information about the PE360 parking guidance and surveillance system detailed in this brochure, contact us at tkhsecurity.com.



tkhsecurity.com

Our Brands:



© 2020, TKH Security.