

PD1104Z2-EI

4 Mp intelligent IP outdoor PTZ camera 36x zoom IR

Quick Start Guide

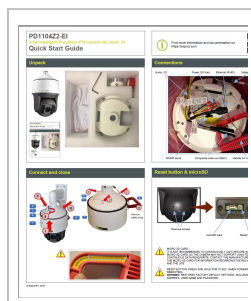


Find more information and documentation on <https://siqura.com>



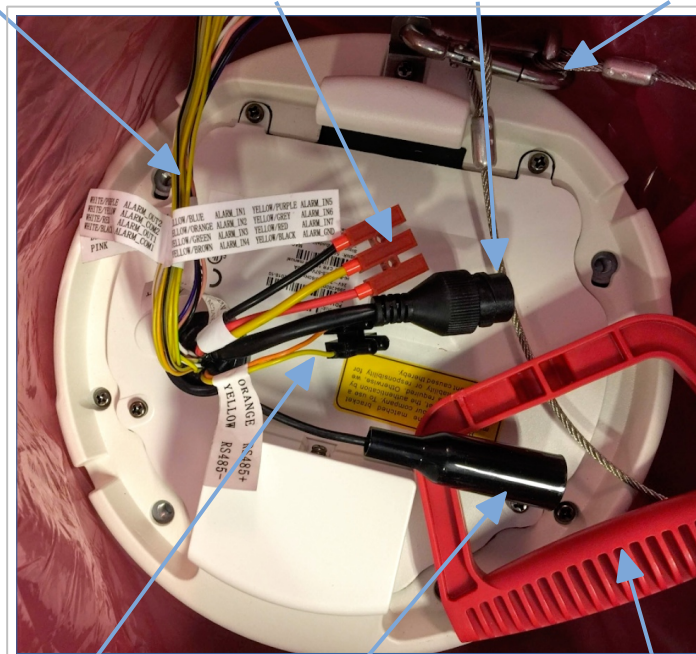
SIQURA

Unpack



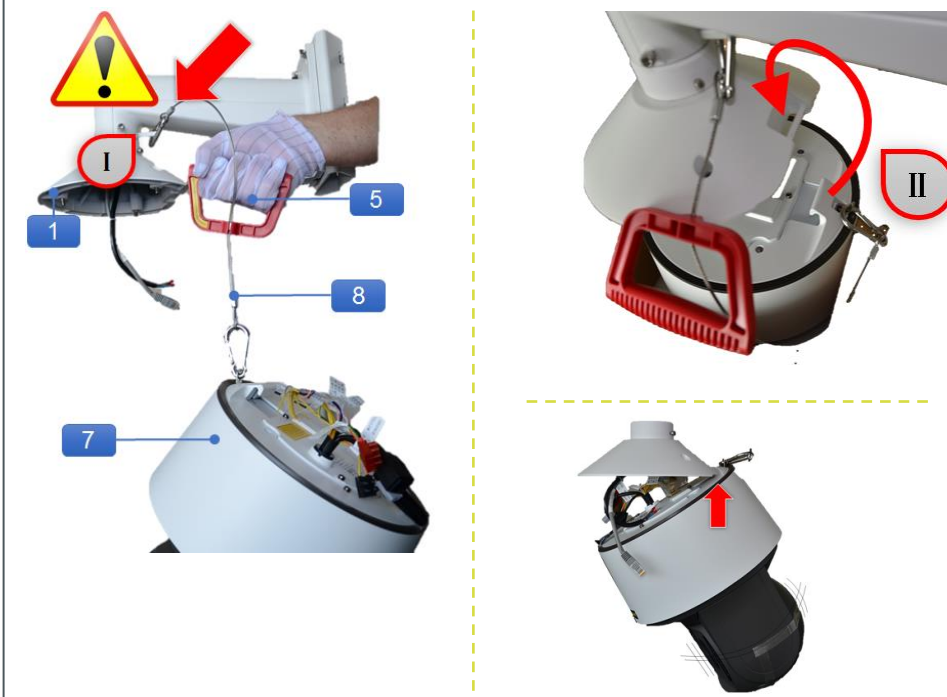
Connections

Audio, I/O Power (24 Vac) Ethernet (RJ45) Safety cord & clip

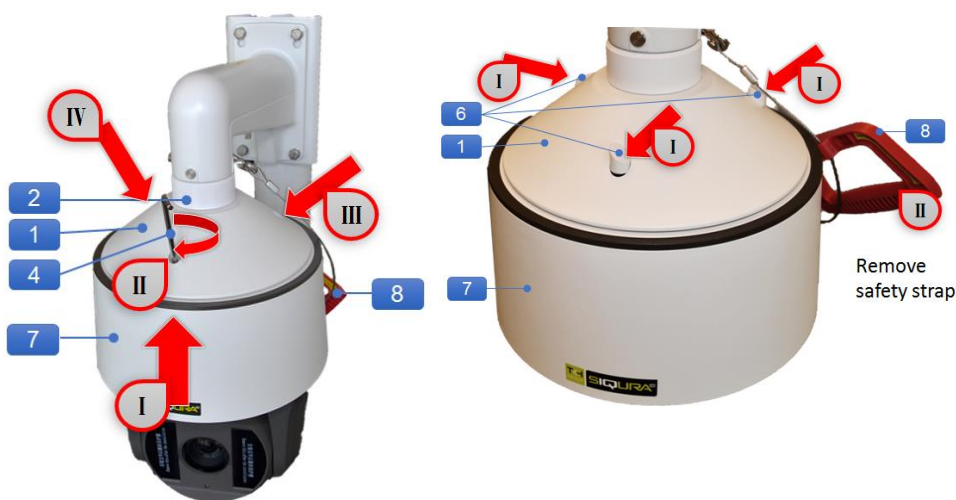


RS485 serial Composite video out (BNC) Handle for installation

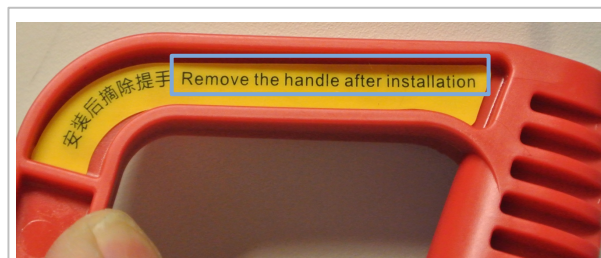
Mounting



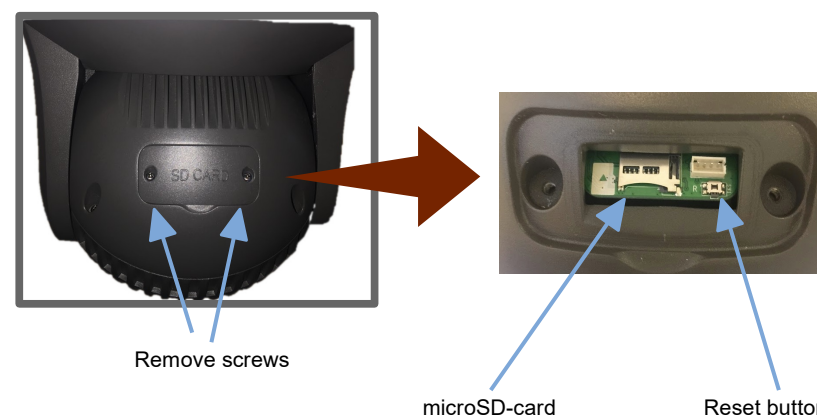
Connect and close



Remove safety strap



Reset button & microSD

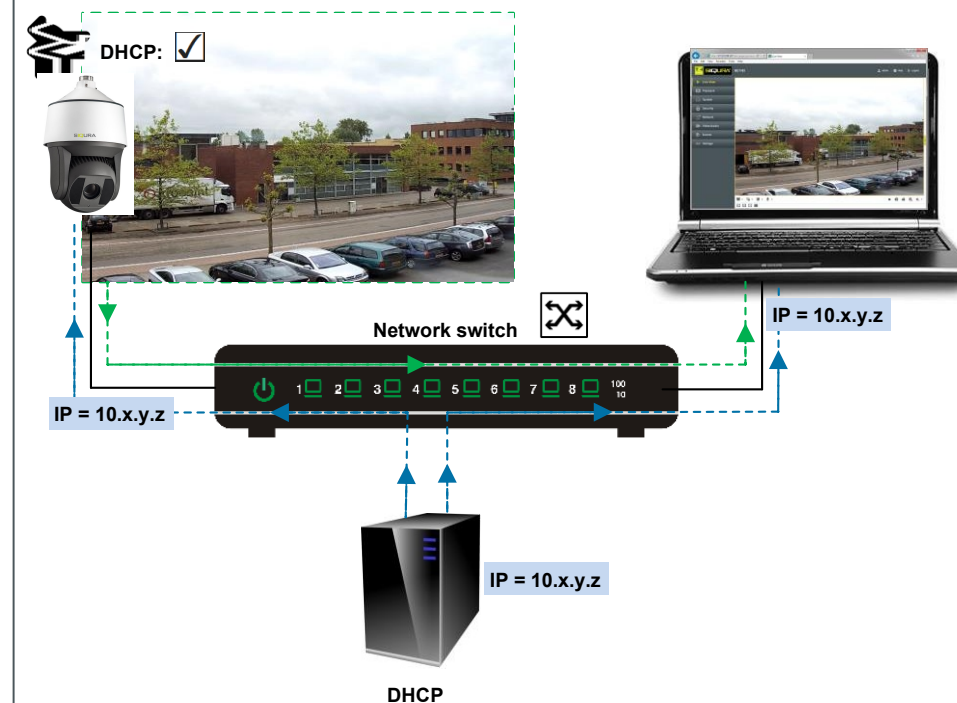


MICRO SD CARD:
IT IS NOT RECOMMENDED TO CONTINUOUSLY (24/7) RECORD WITH THE MICRO SD CARD, AS THE CAMERA MAY NOT SUPPORT LONG-TERM CONTINUOUS DATA READ/WRITE. CONTACT THE MANUFACTURER OF THE MICRO SD CARD FOR INFORMATION REGARDING THE RELIABILITY AND THE LIFE

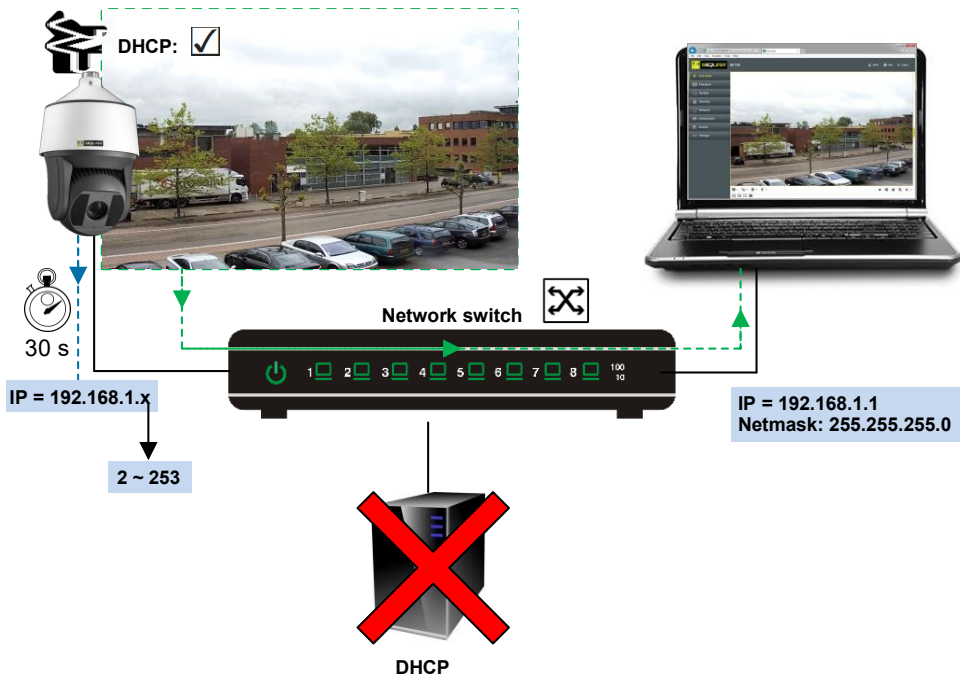


RESET BUTTON: PRESS AND HOLD FOR 10 SEC. WHEN POWERING ON OR REBOOTING.
WARNING: RESTORES FACTORY DEFAULT SETTINGS, INCLUDING IP ADDRESS, USER NAME AND PASSWORD.

Use DHCP server / Utiliser un serveur DHCP

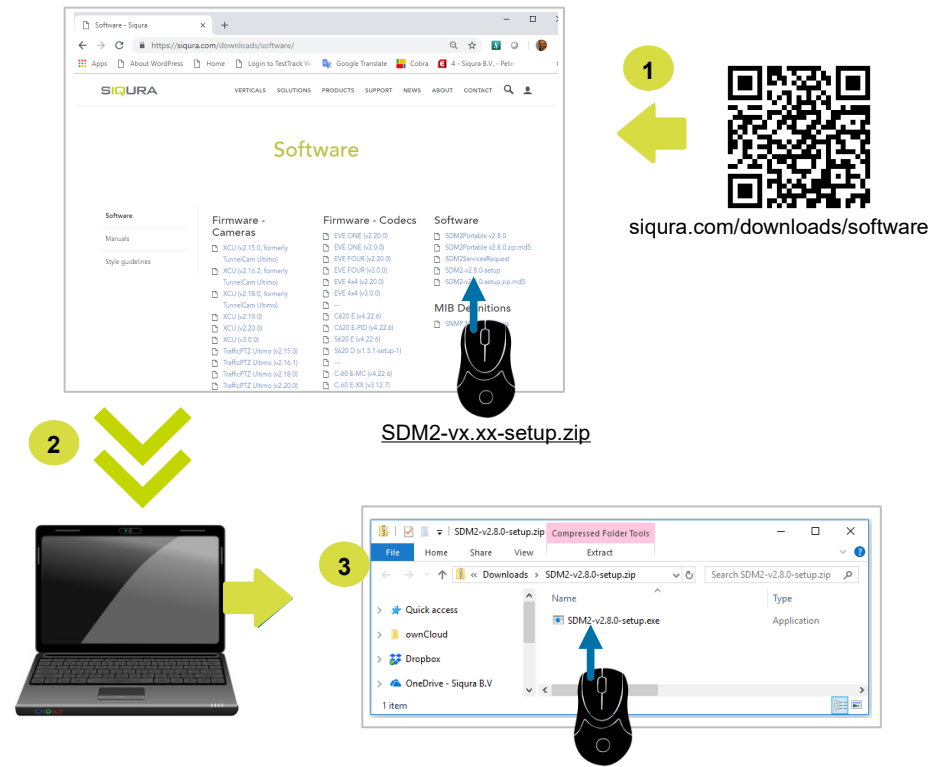


Use fixed IP address

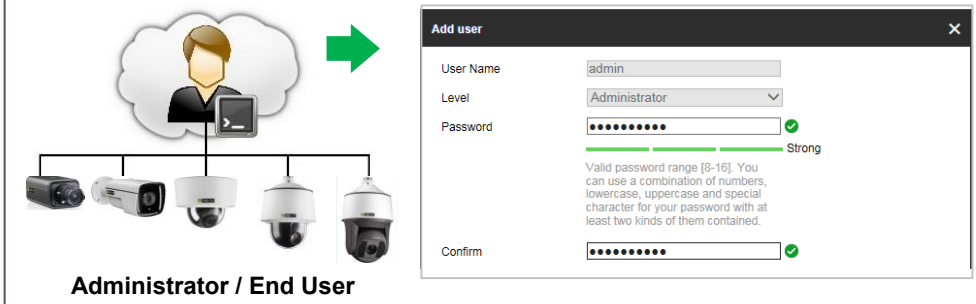


Use Device Manager (see next) to discover the camera on the network.

Auto-discover with Siqura Device Manager



Set administrator password



qwerty1234

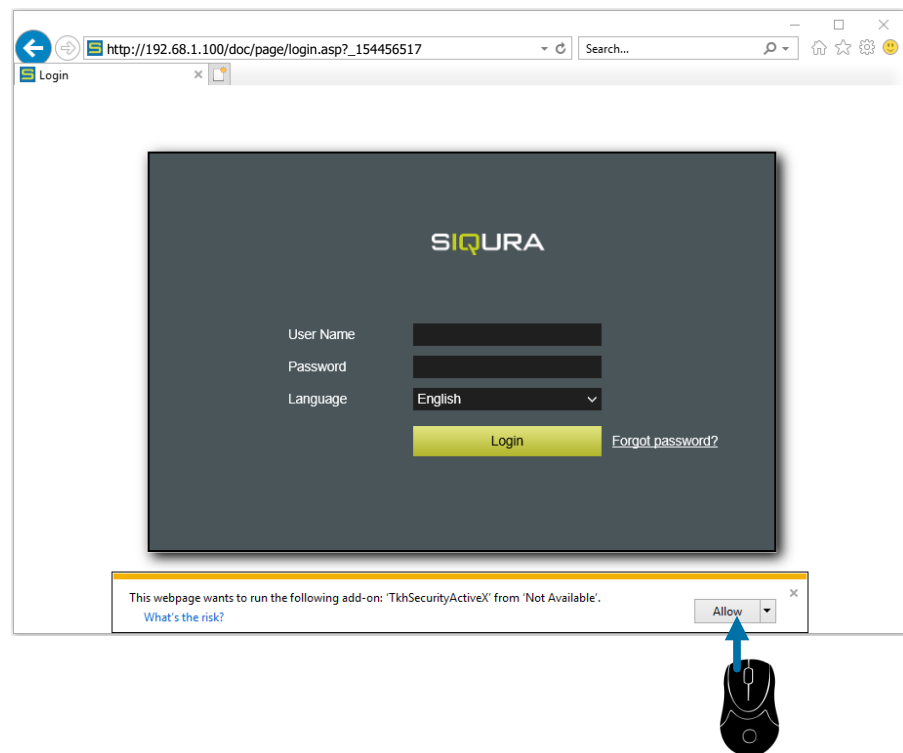


x6W@oM0a!9#F

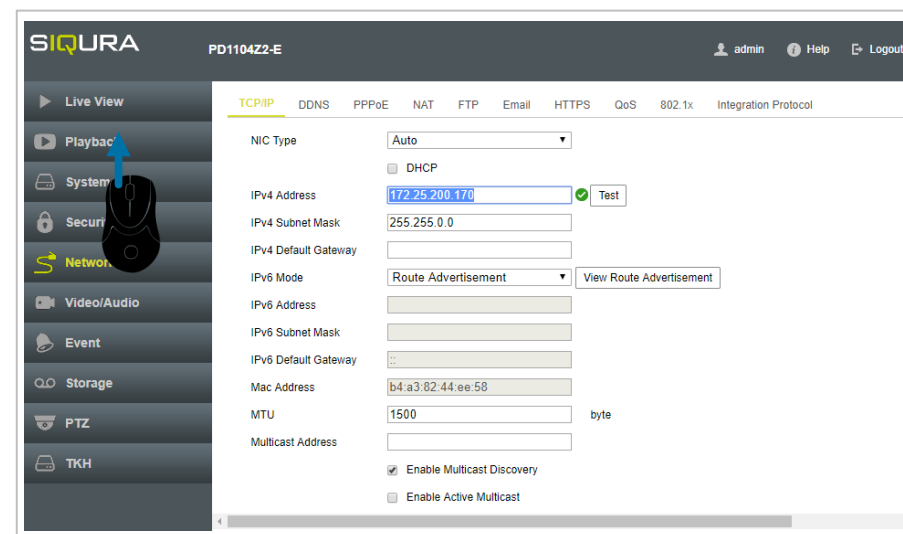


Set a strong password!

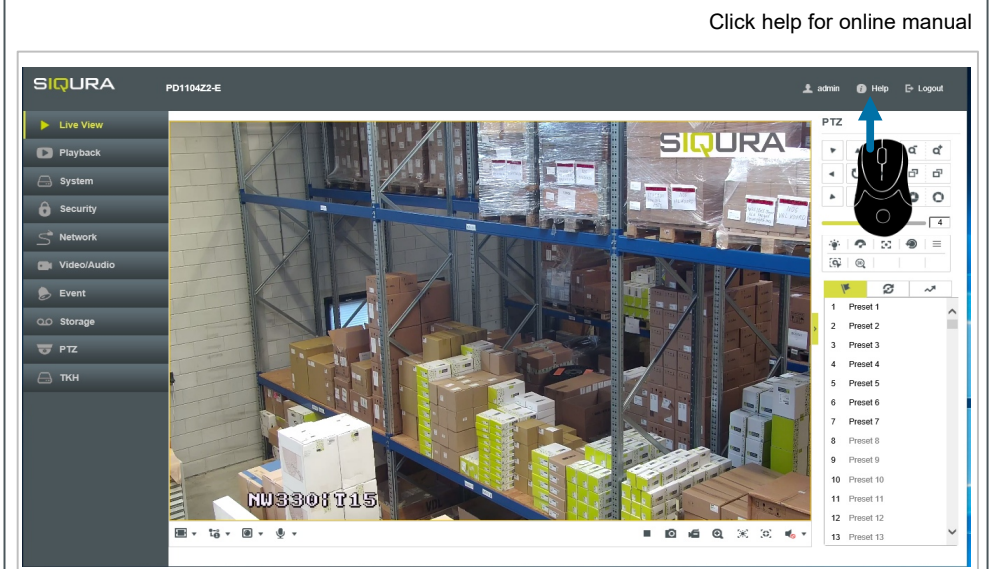
Open web interface & install web services



Change IP-address



View live video and embedded user manual



For more Information
<http://siqura.com>