

MSG2300 Series Enterprise Gateway

By integrating routers, switches, firewalls, VPN, and WLAN in one single device, MSG2300 Series Enterprise Gateway is simple to use and manage for SMEs (small and medium businesses) and enterprise small branch offices. The gateway provides the performance required for concurrent services, including firewall, content filtering, encryption for VPNs, IEEE 802.11g/n for mobility, and quality-of-service (QoS) features for optimizing voice and video applications at broadband speeds. Easy deployment and centralized management features help enable enterprises or service providers to deploy the Raisecom MSG2300 Series Enterprise Gateway, and greatly reduce both the equipment and management cost.



MSG2300 Series Enterprise Gateway

Highlights

- Connection Flexibility** Dual WAN connections: One 10/100/1000BASE-T Gigabit Ethernet WAN port, One Gigabit Ethernet optical port for additional SFP for WAN connectivity. 3G Wireless (WCDMA/EVDO) backup or primary.
- Service Assurance** Support IEEE802.1q, 802.1p and TOS/Diff-serv
- Integrated Network** Support Routing, NAT/NAPT, DHCP, DNS/DDNS, IEEE802.11b/g/n, PPPoE
- Advanced Security** Support VPN, Firewall, Content filtering, Anti-DoS, Anti-ARP, Antivirus, IPS, IDS
- Easy Management** Management via Web management, TR069, SNMP, Telnet, CLI

Typical Application

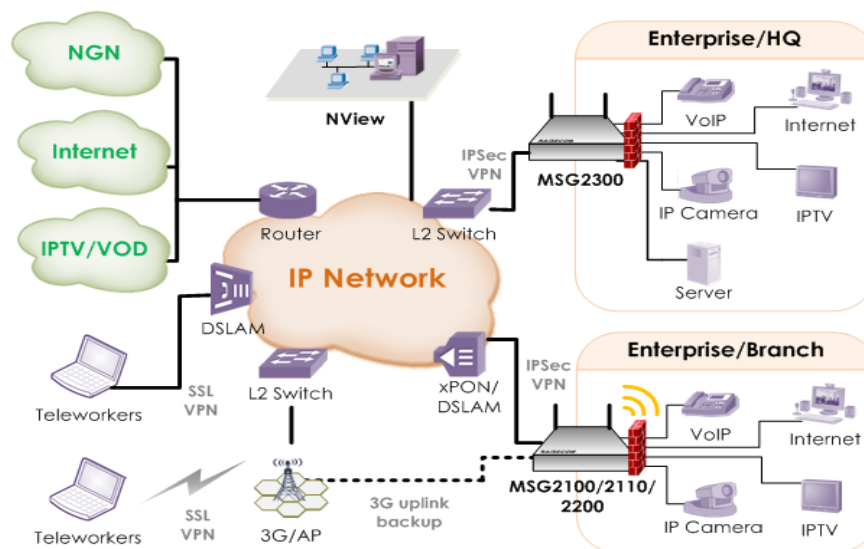


Figure.1 SME VPN Interconnections

Features

IP features

Routing capability - Static & Dynamic routing (RIPv1/v2), OSPF
Generic routing encapsulation (GRE)
Network Address Translation (NAT)/NAPT
IGMP Proxy/Snooping
Dynamic Host Configuration Protocol (DHCP) server, relay, and client
Domain Name System (DNS) Client, Proxy
Dynamic Domain Name System (DDNS)
Access control lists (ACLs)
Supports PPPoE
Supports Ipv6

Switch features

Auto Media Device In/Media Device Cross Over (MDI-MDX)
Storm Control
MAC filtering

Security features

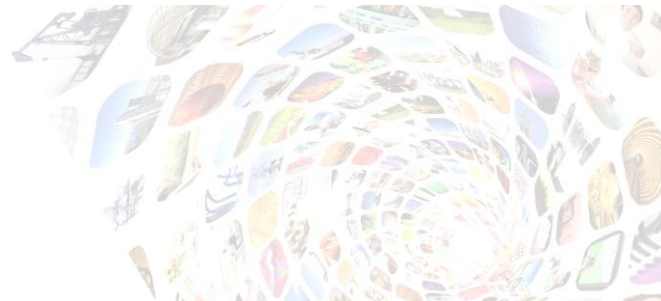
Layer 2 Tunneling Protocol (L2TP)
Secure Sockets Layer (SSL) VPN for secure remote access,
SSL 2.0/SSL3.0/TLS1.0
Maximum of up to 100 IPSec VPN Tunnels
Hardware-accelerated DES, 3DES, AES 128, AES 192, and AES 256
Authentication (SHA-1, MD5)
Manual Key, IKE, PKI (X.509)
Zone-based policy firewall:
Stateful inspection transparent firewall
Dynamic and static port security
Advanced application inspection and control
Content filtering
ACLs
Anti-DoS
Anti-ARP
Antivirus
Intrusion detection system(IDS)
Intrusion prevention system(IPS)

WLAN features

Automatic rate selection for 802.11g
2 x 2 MIMO radio operation
Autonomous or unified access point
Software-configurable transmit power
Static and dynamic Wired Equivalent Privacy (WEP)
WPA /AES/TKIP
MAC authentication and filter

QoS

IEEE 802.1P



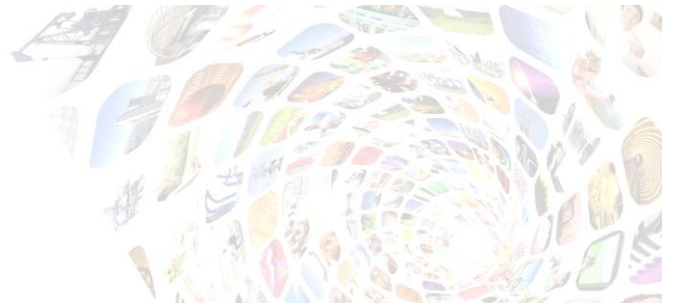
	ToS/Diff-Serv
	Scheduling algorithm: SP,WRR,SP+WR
Throughput	150 Mbps,220,000 PPS when firewall and NAT are enable
USB features	One USB 2.0 port for booting, and loading configuration One for 3G Wireless backup or primary.
Management features	Web management TR069 Telnet SNMPv1/v2/v3 CLI
High-availability features	3G Wireless backup (3G models only)

Specifications

WAN interface	1*10/100/1000Base-T and 1 GE optical port for additional SFP interface 1*EVDO/WCDMA Wireless backup or primary
LAN interface	8*10/100M auto-negotiation RJ45 connector
Wlan interface	2*IEEE 802.11b/g/n
Serial port	9600bps/8bit/none parity/1
configuration	stop bit/none flow control
Dimension	230*160*44.2mm (W*D*H)
Weight	< 2kg
Power supply	AC Power supply: 100V~240VAC
Power consumption	≤ 15W (at max load)
Working environment	Temp: 0 ~ 45 Celsius RH:10 ~ 90% non-condensing

Compliances

Standards & protocols	IEEE802.3-2002 IEEE802.3ah-2004 IEEE802.3 10BaseT IEEE802.3u 100BaseTX IEEE802.3ab 1000BaseT IEEE802.3z 1000BaseX IEEE802.1w IEEE802.3x full duplex on 10BaseT, 100BaseTX, and 1000BaseT ports IEEE802.1q-2003 IEEE802.1p IEEE802.11b IEEE802.11g IEEE802.11n TR069
--------------------------	--



Ordering Information

MSG2300-GEGF-AC	1*10/100/1000Base-T and one GE optical port for additional SFP uplink, 2*USB2.0 port , 1*EVDO/WCDMA backup or primary, 8*10/100Base-T, 1*WLAN(IEEE802.11b/g/n), 100~240VAC, 50/60Hz.
MSG2300-2GF-AC	2*GE optical port for additional SFP uplink, 2*USB2.0 , 1*EVDO/WCDMA backup or primary, 8*10/100Base-T, 1*WLAN(IEEE802.11b/g/n), 100~240VAC, 50/60Hz
MSG2300-2GE-AC	2*10/100/1000Base-T uplink, 2*USB2.0 port , 1*EVDO/WCDMA backup or primary, 8*10/100Base-T, 1*WLAN(IEEE802.11b/g/n), 100~240VAC, 50/60Hz.
MSG2300-EPON-AC	1*EPON optical port uplink, 2*USB2.0 , 1*EVDO/WCDMA backup or primary, 8*10/100Base-T, 1*WLAN(IEEE802.11b/g/n), 100~240VAC, 50/60Hz.