



MSG1200-GEC | SOHO/Home gateway

Product Overview

The MSG1200-GEC is highly integrated Gigabit Ethernet FTTH wireless gateway, which is designed to interoperate with various Ethernet Switches from major vendors to meet the worldwide residential market requirements. By integrating routers, switches, firewalls, VPN, WLAN and USB interface for 3G in one single device, MSG1200-GEC SOHO/Home Gateway is simple to use and manage for Home and SOHO users. The gateway provides the performance required for concurrent services, including firewall, content filtering, encryption for VPNs, VOIP, IEEE 802.11 b/g/n for mobility, 3G dongle uplink for primary or backup and quality-of-service (QoS) features for optimizing voice and video applications at broadband speeds. Easy deployment and centralized management features help enable SOHO/Home users or service providers to deploy the Raisecom MSG1200-GEC SOHO/Home Gateway, and greatly reduce both the equipment and management cost.

Highlights

- Combo GE interfaces uplink
- USB interface for 3G dongle uplink
- Support 802.11 b/g/n
- Support IEEE802.1q, 802.1p and TOS/Diff-serv
- Support L2TP/IPSEC/SSL VPN
- Firewall, Content filtering, Anti-DoS, Anti-ARP
- RIP v1/v2, OSPF, IPv4/IPv6
- Support Routing, NAT/NAPT, DHCP, DNS/DDNS, IEEE802.11 b/g/n, PPPoE
- Standard alone and wall-mounted design
- Managed via Web management, TR069, SNMP, Telnet, CLI

Specifications

Interface/Modules:

WAN: GE combo port:1x100/1000 Mbps GE SFP port,1x10/100/1000 Mbps GE RJ45 port

LAN: 1x10/100/1000 Mbps GE RJ45 port
3x10/100Mbps FE RJ45 ports

USB interface: 1xUSB 2.0 interface for 3G dongle

Console: 1 x RJ45 port

Voice: 2xFXS RJ11 ports

WLAN: built-in Antennas

Dimensions: 198(L)× 163(W) ×35(H) mm

Weight: 0.39Kg

Operating temperature: 0 to 55°C

Storage temperature: -25 to 70°C

Humidity: 10% to 95%, non-condensing

Power supply (input Voltage):

External AC to DC power adapter, input:100-240V AC 50/60HZ
output:12VDC 1Amp

Power consumption: <12W

WAN

- Support route, bridge, mix three modes
- Duplex and speed configurable

LAN

- Support Fast Ethernet access
- Support standard L2 switch functions
- Support Port statistical functions
- Support MAC address binding

International Headquarters

Building 2, No. 28 of the Shangdi 6th Street,
Haidian District, Beijing. 100085, China
Tel: +86 10 8288 3305
Fax: +86 10 8288 3056
www.raisecom.com

U.S.A. Headquarters

19337 US 19 North, Suite 306
Clearwater, Florida. 33764. USA.
Tel: +1 888 816 4808
Fax: +1 727 547 9124
Email: sales@raisecomusa.com

Raisecom Technology Co., Ltd.

Copyright@1999-2013
All rights reserved
Technical information is subjected to
change without notice

VLAN

- IEEE802.1q(VLAN)
- Support Access and trunk port types
- VLAN IP configurable
- SSID can be distributed into different VLAN

3G

- 3G uplink to the internet
- USB interface for 3G dongle uplink as the primary or backup with wan connection

Routing

- Static Routing:
 - Support equivalent routing
 - Support Static routing priority
 - Support configuration weights
- Policy Routing:
 - Support according to the incoming interface, the source address of an object, the object of the destination address and service objects, time object matching strategy
- OSPF:
 - Support broadcast and point-to-point two types of network
 - Support OSPF packet reception and transmission
 - Support security certification
 - Support the CIDR Classless Inter-Domain Routing
 - Support OSPF certification
 - Support routing introduced and redistributed
- RIP
 - Support RIP v1,v2
 - Support RIP equivalent routing
 - Support split horizon and poison reverse
 - Support route summarization
 - Support routing introduced and redistributed
- Load balancing
 - Support through equal-cost routes to achieve load balancing

NAT

- Support NAT
- Support one-to-one address mapping
- Support port mapping and virtual server

functionality

- Support DNS/FTP/H.323/SIP

Page Push

- Support global push function
- Support interface push function

EOIP

- Three ways to establish a tunnel

At the same time set the tunnel ID and peer IP

Client side: set the tunnel ID and the server IP

Server side: set the tunnel ID, without setting IP of client side

- Management function
 - Support the establishment of the tunnel;
 - Support binding the local interface and remote IP
 - Support deleting tunnels
 - Support checking information of tunnels

Voice Features

- Support H.248 version: RFC 3015,3425,ITU-T H.248.v1/v2/v3
- Support RTP / RTCP: RFC 3550 ,RFC 3551
- Support voice CODECs like G.711, G.726, G.729AB, BV16,ILBC, T.38, and etc
- G.168 line echo cancellation with programmable tail
- DTMF tone detection and generation;
- Support RFC 2833/RFC 2198/Info
- Fax/Modem detection and pass-through and T.38

VoIP & Telephony Bonus Services

- Support SIP (RFC3261), SDP (RFC2327, RFC3264) as well as both TCP and UDP transport
- Support User Agent Client (UAC) - User Agent Server (UAS) call, or proxy call routing
- Support SIP and telephone URL addressing
- Support in-band DTMF tone sending/receiving and out-of band DTMF signaling with RTP as per RFC2833
- Bonus services include:
 - Call Forwarding: Unconditional, No Response, On Busy
 - Call waiting: Force Busy, Pickup and Release Old,

International Headquarters

Building 2, No. 28 of the Shangdi 6th Street,
Haidian District, Beijing. 100085, China
Tel: +86 10 8288 3305
Fax: +86 10 8288 3056
www.raisecom.com

U.S.A. Headquarters

19337 US 19 North, Suite 306
Clearwater, Florida. 33764. USA.
Tel: +1 888 816 4808
Fax: +1 727 547 9124
Email: sales@raisecomusa.com

Raisecom Technology Co., Ltd.

Copyright@1999-2013
All rights reserved
Technical information is subjected to
change without notice

- Pickup and Put Old on Hold, Switch between two calls
- Call Transfer, Call back busy subscriber, Call Back last number called (call return)
- Enquiry service
- Three way conference
- Provisioning through TFTP client with configuration profile

Reliability

- Link Backup
 - Two or more links backup
 - Traffic load balancing of WAN interface
- Link status detection
 - Support IP Address detection and configuration of static route status according to checked results
 - Can be used as Link switch testing tool

Qos

- Bandwidth management
 - Layer 3 interface-based bandwidth management
 - IP-based Bandwidth Management
 - bandwidth limitation
 - Dynamic bandwidth adjustment
- Traffic identification and scheduling
 - Scheduling algorithm: SP,WRR,SP+WR
 - ToS/Diff-Serv Session limitation
- Session limitation
 - Total Session number limit
 - Session limit based on IP-Add
 - Session limit based on physic interface

Security features

- Layer 2 Tunneling Protocol (L2TP)
- Secure Sockets Layer (SSL) VPN for secure remote access,
- SSL 2.0/SSL3.0/TLS1.0
- Maximum of up to 100 IPSec VPN Tunnels
- Hardware-accelerated DES, 3DES, AES 128, AES 192, and AES 256
- Authentication (SHA-1, MD5)
- Manual Key, IKE, PKI (X.509)

- Zone-based policy firewall:
- Stateful inspection transparent firewall
- Dynamic and static port security
- Advanced application inspection and control
- Content filtering
- ACLs
- Anti-DoS
- Anti-ARP

IP features

- IGMP Proxy/Snooping
- Dynamic Host Configuration Protocol (DHCP) server, relay, and client
- Domain Name System (DNS) Client, Proxy
- Dynamic Domain Name System (DDNS)
- Access control lists (ACLs)
- Supports IPv4/IPv6
- Supports PPPoE

Management features

- Web management
- TR069
- Telnet
- SNMPv1/v2/v3
- CLI

Standard Compliance

- IEEE802.3
- IEEE802.3ah
- IEEE802.3 10BASE-T
- IEEE802.3ab 1000BASE-T
- IEEE802.3u 100BASE-T
- IEEE802.3z 1000BASE-X
- IEEE802.1W
- IEEE802.3ad
- IEEE802.3x
- IEEE802.1p
- IEEE802.11b
- IEEE802.11g
- IEEE802.11n
- IEEE802.1q
- TR069

International Headquarters

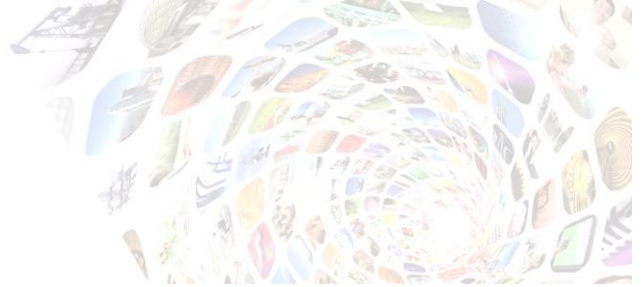
Building 2, No. 28 of the Shangdi 6th Street,
Haidian District, Beijing. 100085, China
Tel: +86 10 8288 3305
Fax: +86 10 8288 3056
www.raisecom.com

U.S.A. Headquarters

19337 US 19 North, Suite 306
Clearwater, Florida. 33764. USA.
Tel: +1 888 816 4808
Fax: +1 727 547 9124
Email: sales@raisecomusa.com

Raisecom Technology Co., Ltd.

Copyright@1999-2013
All rights reserved
Technical information is subjected to
change without notice



Ordering Information

Model	Description
MSG1200-GEC	WAN: Combo GE ports uplink:1*10/100/1000Mbps electrical GE RJ45 port and one GE optical port for additional SFP; 1*USB2.0 for external 3G dongle; LAN: 1*10/100/1000Base-T+3*10/100Base-T ;1*WLAN(IEEE802.11b/g/n) with built-in Antenna ;external AC to DC power adaptor: input: 100-240V AC 50/60 Hz output:12 VDC 1Amp;

International Headquarters

Building 2, No. 28 of the Shangdi 6th Street,
Haidian District, Beijing. 100085, China
Tel: +86 10 8288 3305
Fax: +86 10 8288 3056
www.raisecom.com

U.S.A. Headquarters

19337 US 19 North, Suite 306
Clearwater, Florida. 33764. USA.
Tel: +1 888 816 4808
Fax: +1 727 547 9124
Email: sales@raisecomusa.com

Raisecom Technology Co., Ltd.

Copyright@1999-2013
All rights reserved
Technical information is subjected to
change without notice