

ISCOM5800E Optical Line Terminal

ISCOM5800E is 6U GEAPON OLT device which supports maximum 40PON ports and 40GE uplink ports. Designed for large enterprises, SME and home users access, it offers great flexibility to deliver triple-play services to home users. Interconnection between HQ and branches with E-Line and E-LAN solution can be well supported. Oppositely working with dedicated RAISECOM ONU for SME users, it allows to deploy IPSec VPN and SSL VPN. With the help of ISCOM5800E-10GE/GE8A card, operators can easily eliminate the existing uplink bottleneck and make high-speed connection. Hot-swappable redundant power supply makes the maximum network uptime. Modular design allows the lowest initial CAPEX and TCO is going down when the more capacity is required.

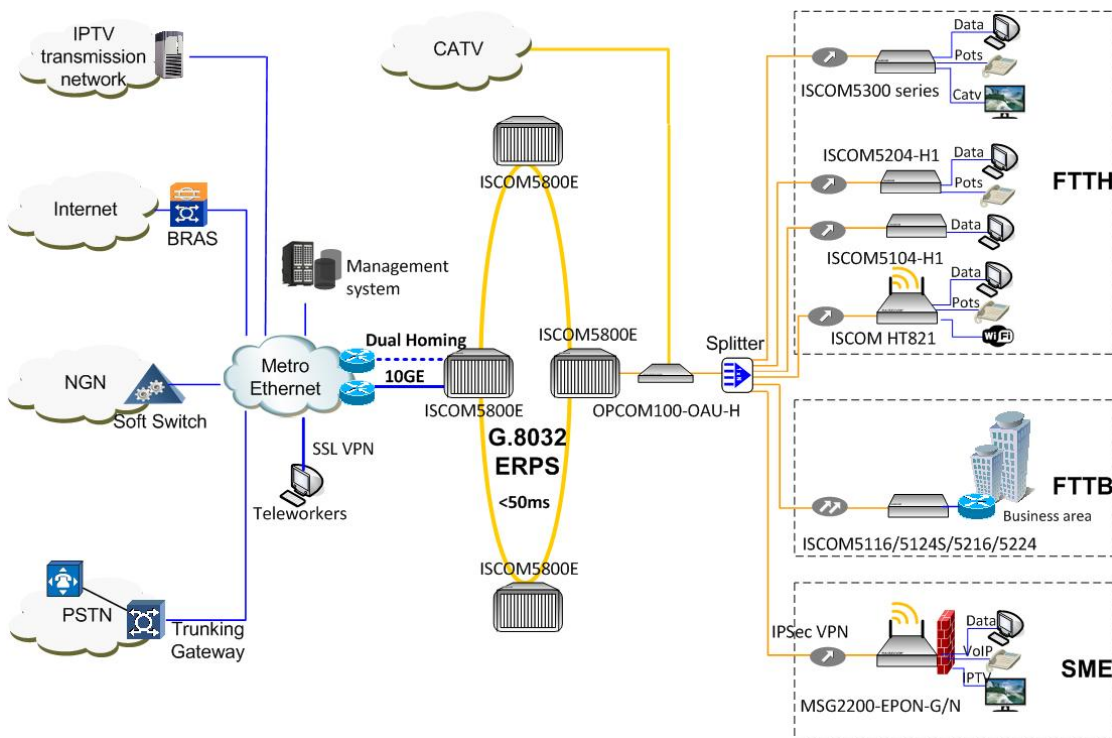


ISCOM5800E

Highlights

Network Security	Advanced ACL, RADIUS, TACACS+, DAI, storm-control, IP Source Guard, Port Security MAC, Prevent DOS Attacking; Triple churning; P2P access control; SSHv2; Port isolate
Line protection	Support uplink-protect including Uplink-ring-protect/dual-homing protect, PON-protect including Type A/B/C/D
Ethernet ring	Support G.8032 (ERPS), up to 8 Ethernet rings, 124 devices in each ring
10GE connection	Maximum uplink 40GE connection
Ethernet OAM	IEEE 802.3ah EFM, Y.1731 CFM and SLA
ONU service template	Deploy a batch of ONUs with ONU-SVR-template, 80 templates
IP routing	Support static route, default route and RIP v1/v2
ONUs capacity	Maximum 2560 ONUs/per OLT
MAC address table	32K MAC address, 1K static MAC address, 1K multicast MAC address; Support MAC address clear/search/trace/copy function
VLAN	Basic VLAN, Basic QINQ, flexible QINQ, VLAN Translation
ONU Authentication	Support five types of authentication mode: None, MAC, SN, Password, SN + Password
Switching fabric	352 Gbps
Reliability Index	System availability $\geq 99.999\%$, fault probability $\leq 1.5\%$, MTTR $\leq 2H$, MTBF $\geq 100\ 000H$

Typical Application



Products involved

- OLT:
 - ISCOM5800E
- ONUs:
 - ISCOM5104-H1
 - ISCOM5204-H1
 - ISCOM HT821
 - ISCOM5116/5124S
 - ISCOM5216/5224
 - ISCOM5304
- SME:
 - MSG2200-EPON-G-AC
 - MSG2200-EPON-N-AC
- CWDM:
 - OPCOM100-OAU-H

Features

DBA	Support three forms of DBA: FIR, BIR, PIR; 64kbps granularity
FEC	Support two-way FEC
P2P	P2P Support P2P access control
VLAN	IEEE 802.1Q VLAN: 4094 Concurrent VLANs, VLAN mode: Access and Trunk port-based QINQ, total 10K flexible qinq, 2K VLAN translation;
Link Aggregation	Up to 6 groups and 8 ports per group; Group member max-port-number 26; Load balance based on MAC/IP/MAC+IP; Standard LACP (static only)
Storm Control	Broadcast, multicast, unicast, DLF storm control; Control mode: global, bps, burst; Default burst: 8KB
Mirror	Port-to-Multiport mirroring, Separate mirroring configurations for ingress & egress ports
Link Aggregation	Load balance based on MAC/MAC+IP; Support Manual configuration and static LACP; besides 1:1 Link Backup
STP	STP, MSTP
Port Isolate	Support Layer-2 isolate of Physical Port and designated VLAN port
Transparent Relay	BPDU; LACP; LLDP; STP
Advanced	
OAM	IEEE802.3ah OAM including discovery, link performance, remote loopback,



	<p>fault detection & performance stats per OAM standards; OAM Active/Passive mode; EFM、CFM and SLA.</p>
System Management	<p>Console/Telnet/NMS/SNMP/SSHv2 management; RMON, 16 Layer 3 interfaces, Bridge MIB (RFC1493);System log;</p>
Maintenance	<p>Debug information output; PING (packet internet groper); Port statistic; Port dynamic statistic</p>
Multicasting	<p>Support more than 1024 multicast groups; IGMP SnoopingV1/V2/V3 ;IGMP Proxy V1/V2/V3;</p> <p>Support static multicast and unknown multicast drop;</p> <p>Multicast VLAN Registration (MVR); Controlled multicasting of CTC</p>
QoS	<p>Support Global trust model、TRUST mode: CoS/TOS/DSCP priority; Global CoS/DSCP to queue mapping;</p> <p>Global queue scheduling based on port;</p> <p>Scheduling mode: SP/WRR/DRR/SP+WRR/SP+DRR; Flow statistic;</p> <p>Flow-based mirror/rate-limit/ redirection/VLAN swapping/rewriting of 802.1p CoS, DSCP, IP Precedence</p>
Ethernet Ring	<p>Support Ethernet ring protection switch (ERPA), Up to 8 Ethernet rings, 124 devices in each ring; switching time≤50ms</p>
ACL	<p>Support L2 - L4 packet filtering based on MAC(source MAC address、 destination MAC address) ACL, IP(source IP address、 destination IP address) ACL、MAP ACL(CoS、DSCP、VLAN、IP precedence and priority、 L4-port、...and other User-designed) 、Filter Ingress or Egress ACL on port</p>
Safety Features	<p>Client classification and password protection;</p> <p>Binding of MAC address & port; storm-control, RADIUS,TACACS+,DAI,IP Source Guard, Port protection/isolate/backup, Prevent DoS Attacking</p>
LLDP	<p>Discovery remote base on link layer;</p> <p>Get remote basic information</p>
Time Management	<p>Time zone; Time modification; Support SNTP & NTP</p>
DHCP	<p>DHCP Client/Snooping/Server/Option 82/Relay</p>
Port Backup	<p>Port Backup by port or port based on VLAN</p>
Software Upgrade	<p>XMODEM, FTP upgrade in BOOTROM FTP/TFTP</p>

Specifications

Performance

Backplane Up to Bi-directional 36Gbps

Compliances

Standards &

IEEE 802.1Q VLAN



Capacity	128MB DRAM; 32MB flash; 1K IGMP groups	protocols	IEEE 802.3ad Link Aggregation IEEE 802.1ad QinQ IEEE 802.1D Spanning Tree Protocol IEEE 802.1s MSTP RFC 2131 DHCP RFC 2132 DHCP Options IEEE 802.1x Security IEEE 802.1p CoS Prioritization IEEE 802.3x Flow Control IEEE 802.3ah OAM IEEE 802.1ag CFM ITU Y.1731 Services OAM ITU-T G.8021 ITU-T G.8031 RFC1465 Static Routing, RFC1058RIPv1/RFC2453RIPv2 IGMP v1/v2/v3 RMON I and II standards SNMPv1/v2c/v3 MEF9/MEF14 G.992.1/G.992.3/G.992.5 G.991.2/G.993.1/G.993.2 RFC 3261/2543、RFC 2327、RFC 3550、 ITU-T H.248.v1/v2/v3 DHCPv4/v6 RFC2131 RFC3315
Indicators	Power Supply (flashing); GE port: LINK/ACT; SFP port: LINK/ACT		
Physical Interface	Management port: 1 console (RJ45); Client interfaces: 2 x 10/100 Base-TX RJ45 port; Network interfaces: 2x 100/1000Base-X SFP; 4x 10/100/1000MBase-T RJ45; GEPON interfaces: 12x 1000BASE-PX20-D-SP SFP		
Power Specs	AC: 220V, 50/60Hz DC: -48V/+24V Full load: ≤250W		
User Conditions	Operating temp: 0~50 °C (32~122 °F); Storage temp: -25~70 °C (-13~185 °F); Humidity: 5~90% non-condensing		
Dimensions	440(W) x 220(D) x 44.45(H) mm ³		
Weight	≤ 6.0Kg(G.W)		

Ordering Information

ISCOM5800E-15	ISCOM5800E chassis with 15 slots.
FANS360	Fans with intelligent controllable speed and failure monitoring.
ISCOM5800E-SMCB	Switching and control card, which can be inserted into slot 7 or 8.
ISCOM5800E-10GE×2-2GE	Uplink card, which provides 2×10GE XFP slots and 2×1GE SFP slots, can be inserted into slot 6 or 9.
ISCOM5800E-10GE-2GE	Uplink card, which provides 1×10GE XFP slots and 2×1GE SFP slots, can be inserted into slot 6 or 9.
ISCOM5800E-GE8A	GE uplink line module, which provides 8 SFP slots for GE SFPs, can be inserted into slot 5.
ISCOM5800-4GE	Uplink card, which provides 4×1GE SFP slots, can be inserted into any slot except slot 7-8 or 14-15.
ISCOM5800-2GE	Uplink card, which provides 2×1GE SFP slots, can be inserted into any slot except slot 7-8 or 14-15.

ISCOM5800E-EP4A	PON card, which provides four PON interfaces, can be inserted into any slot except slot 7-8 or 14-15.
ISCOM5800-2PON	PON card, which provides two PON interfaces, can be inserted into any slot except slot 7-8 or 14-15.
GSFP-PX20DM-R	PON SFP with digital diagnosis, which is used for ISCOM5800E-EP4A or ISCOM5800-2PON card.
SUB-PWRM-AC	AC 220V input power supply card, output: DC +5V, DC -5V, ringing current, DC -48V power feed. 600 watts
SUB-PWRM-DC	DC -48V input power supply card, output: DC +5V, DC -5V, ringing current, DC -48V power feed. 300 watts
SUB-PWRII-AC	220V/AC Power Supply Module (600W) for ISCOM5800E.
SUB-PWRII-DC	-48V/DC Power Supply Module (300W) for ISCOM5800E.

Appendix Specification of PON interface

Wavelength	RX sensitivity	TX Power	Typical Distance	Overload Point
1490nm	<-27dBm	+2 ~ +7dBm	20KM	>-6dBm