




**DETECT**

**RECOGNIZE**

**IDENTIFY**



**THERMAL AND ELECTRO-OPTICAL CAMERAS AND SYSTEMS  
FOR LONG RANGE THREAT DETECTION AND ASSESSMENT**



Vumii's high-quality, field-proven, zero-light surveillance products are embedded with more than 30 years of experience in developing night vision systems. Vumii products include a portfolio of camera systems that provide long range detection, recognition and identification, night or day, and consists of fixed and PTZ thermal camera systems, multi-sensor PTZ camera systems, and near-IR illuminated PTZ camera systems.





Vumii Imaging is a night vision technology pioneer that delivers a broad spectrum of thermal imaging and other electro-optics products that are time-tested and field-proven. Our products incorporate the latest infrared thermal imaging and optical technology and use only high quality components. Vumii's portfolio of thermal imaging cameras and electro-optical cameras and systems provide every piece of the puzzle for detection, recognition, and identification tasks, day or night.

We focus on our relationships with our customers. We work to provide the highest level of customer service and pride ourselves on our responsiveness to customer needs and concerns.

Vumii partners with its customers to provide innovative and high quality imaging solutions. All our efforts are driven by four guiding principles: delivering innovation, quality, support, and a broad portfolio of products to our valued customers.





## DETECT

Thermal cameras passively detect the thermal energy emitted by all objects and materials to generate a greyscale video image based on the differentiation between the temperature of an active body and the background.

Illuminating cameras actively generate their own near-IR illumination that is projected to and reflects off a scene and back to the cameras, much the same as how visible light is emitted by the sun and reflected to our eyes.

### Threat Detection

Thermal cameras are ideal for 24/7 wide area threat detection tasks, especially when combined with video analytics.

- Wide area day/night observation
- Ideal for video analytics
- High detection rate with low false alarms
- Continuous operation day or night

### Threat Recognition

Thermal and color day imaging cameras with zoomable optics, paired with high resolution day imaging cameras, excel at threat recognition and classification tasks.

- Verification of threat type
- Determine vehicle type
- Determine the number of individual threats

### Threat Identification

Multi-sensor PTZ cameras with near-IR illuminators excel at providing threat identification day and night; they can acquire prosecution level video quality at both short and long ranges.

- Determine friend versus foe
- Extremely fine details in zero light
- See objects held and read text
- See through glass



## RECOGNIZE



## IDENTIFY



# PRODUCT OVERVIEW

## Handhelds



Therm-App



Sii HM



Sii HB



Sii HT

## Thermal Cameras



Sii AT



Sii ML



Sii XRU



Sii XR

## Multi-Sensor Cameras



Accuracii AT Minii



Accuracii AT



Accuracii ML



Accuracii XRU



Accuracii XR

## Illuminated Cameras



Claritii



Discoverii

\* Product design and specifications may change without notice  
\* Some countries may be subject to export licensing requirements

# Therm-App

## ANDROID THERMAL IMAGING DEVICE

### Features and Benefits

- **Multiple Imaging Modes**

Therm-App offers several night-vision modes as well as basic thermography capabilities, providing unmatched versatility for a variety of uses inside and outside.

- **Long Range Vision**

The Therm-App device provides effective detection of faraway targets through its default (19 mm) lens and a wider view through its 6.8 mm lens. Therm-App detects human size targets up to 500m and vehicle size targets up to 1,500m.

- **Easy to Use**

Within minutes, Therm-App is ready for use. Once the application has been downloaded onto the mobile phone, the device is clipped on, connected via a USB cable, and is ready for use.

- **Interchangeable Lenses**

Therm-App offers a variety of lenses to match specific operational needs. Currently available: 6.8/13/19/35mm lens options.



- **Superb image quality**
- **Low power**
- **Convenient**
- **Compact and lightweight**

Smartphone	
Minimal Requirements	Android 4.1 and above, supporting
Hardware	
Imager	384 x 288 microbolometer
Optics	6.8mm lens (55° x 41°) 13mm lens (29°x 22°) 19mm lens (19°x14°) 35mm lens (11° x 8°)
Frame Rate	8.7Hz
Weight	138 grams / 4.86 ounces
Size	55 x 65 x 40mm (2.16 x 2.55 x 1.57in)
Operating Temperature	-10°C to +50°C (14°F to +122°F)
Storage Temperature	-20°C to +50°C (-4°F to +122°F)
Power Supply	No battery, 5V over USB OTG cable, power consumption < 0.5W
Certifications	CE, FCC, RoHS
Encapsulation	IP54

Measurement	
Resolution	384 x 288 pixels (>110,000)
Accuracy	+/- 3°C or 3% (@25°C)
Sensitivity	NETD <0.07°C
Temperature Range Calibration	5 – 90 °C
Software	
Viewing Modes	Night Vision Thermography (Basic)
Output	Video & Audio (h.264), Snapshot
Instant Share	Email, SMS
Android Share	Via media gallery
Color Palettes	Hot White / Hot Black / Iron / Rainbow / Grey / Vivid
Maintenance	Bad pixel repair utility

# Sii HM

## HANDHELD THERMAL MONOCULAR

### Features and Benefits

- **Extra Lightweight & Compact**

The Sii HM thermal monocular provides extra lightweight nightvision capability. Its compact size enables the user to quickly focus on a specific object using only one eye. The monocular is suitable for surveillance, perimeter security, search and rescue, and other applications on land or at sea.

- **Nightvision Capabilities & Long Range Detection**

Sii HM delivers high resolution nighttime vision capabilities, enabling human target detection up to 2,000 meters and vehicle detection up to 4,000 meters.

- **Long Operating Performance**

Sii HM provides brighter and sharper images day or night, in all security and civil operations, offering twenty hours of continuous operation. Sii HM combines excellent performance and affordability in an extra lightweight, highly portable device.



- **Extra light weight**
- **Long range observation**
- **Low maintenance**
- **Long operating life**

Electro-Mechanical Characteristics	
Waterproof	IP67
Operating temperature	-40° to +50°C (-40° to +122° F)
Power source	Rechargeable batteries
Operating time	Up to 20 hours
Start up time	<2 secs (5 secs shutterless version)
External power input	Yes
External video output	Yes
Output computer communication	Yes
Weight	700gr (2.1 lb) without battery
Interface	Standard rail grabber
Packaging	Soft case & hard case

Imaging Characteristics	
Resolution	640 x 480, 17µm
Spectral response	7 - 14µm
Frame rate	25/30 Hz
Video output	PAL/NTSC
Display	OLED Matrix, SVGA >852x600
Brightness and contrast adjustment	Manual/auto
Digital zoom	x1, x2, x3, x4 (continuous digital zoom option)
Optical magnification	x4 (with 75mm lens)
Lens size	45mm, 60mm, 75mm, 100mm, 140mm
Reticle	16 reticles, B/W, range estimation, dynamic reticle
Field of view	8.3° x 6.2° (with 75mm lens)
Polarity control	Manual (white hot / black hot)
Focus	Adjustable 5m to infinity
Image storage	Up to 200 images



# Sii HB

## HANDHELD THERMAL BINOCULAR

### Features and Benefits

- **Nightvision Capability**

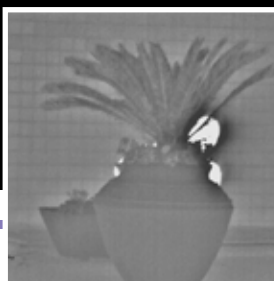
The Sii HB handheld thermal binocular provides night vision capability for surveillance, perimeter security, search and rescue, and other applications on land or at sea.

- **Long Range Detection**

Sii HB delivers high-resolution nighttime vision capabilities, enabling human target detection up to 2,000 meters and vehicle detection up to 4,000 meters.

- **Extra Long Operating Performance**

Sii HB provides brighter and sharper images day or night, in all security and civil operations, offering up to forty hours of continuous operation. Sii HB is an unmatched combination of excellent performance and affordability in a portable, lightweight device.



- **Light weight**
- **Long range observation**
- **Low maintenance**
- **Extra long operating life**

Electro-Mechanical Characteristics	
Waterproof	IP67
Operating temperature	-40° to +50°C (-40° to +122° F)
Power source	Rechargeable batteries
Operating time	Up to 40 hours
Start up time	<2 secs (5 secs shutterless version)
External power input	Yes
External video output	Yes
Output computer communication	Yes
Weight	950gr (2.1 lb) without battery
Interface	Standard rail grabber / 1/4" screw thread
Packaging	Soft case & hard case

Imaging Characteristics	
Resolution	640 x 480, 17µm
Spectral response	7 - 14µm
Frame rate	25/30 Hz
Video output	PAL/NTSC
Display	OLED Matrix, SVGA >852x600
Brightness and contrast adjustment	Manual/auto
Digital zoom	x1, x2, x3, x4 (continuous digital zoom option)
Optical magnification	x4 (with 75mm lens)
Lens size	45mm, 60mm, 75mm, 100mm, 140mm
Reticle	16 reticles, B/W, range estimation, dynamic reticle
Field of view	8.3° x 6.2° (with 75mm lens)
Polarity control	Manual (white hot / black hot)
Focus	Adjustable 5m to infinity
Image storage	Up to 200 images



# Sii HT

## HANDHELD TACTICAL CAMERAS

### Features and Benefits

- **Rugged, Mobile and Compact**

Sii HT is easily carried into hot, cold, dusty and other harsh field conditions.

- **High Resolution**

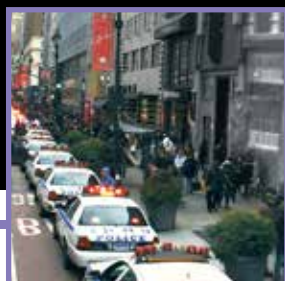
Detailed thermal image with a 25μ 384 x 288 PAL (25μ 320 x 240 NTSC) detector.

- **Extended Range Performance**

A variable focus 35mm lens allows the viewing of a person at up to 700 meters or a vehicle at more than 1.6km.

- **Wide Variety of Accessories**

Wireless video transmission, remote viewing units, attached recording devices, and command and tactical accessories provide unlimited customization possibilities.



- **Rugged and portable**
- **Excellent image quality**
- **Wide variety of accessories**
- **Rechargeable battery**

Electro-Mechanical Characteristics	
Certification	IP65
Operating Temperature	-10° to +50°C (-14° to +122° F) LWIR 7.5 -14μm
Power Source	NiMH rechargeable battery
Output	10V nominal
Capacity	2400 mA.hr
Operating Time	3 hours nominal
Start Up Time	6 seconds nominal
Charger Single Battery	220VAC or 120 VAC or 12 VDC
Battery Life	1,000 charge cycles
Battery Weight	0.6 pounds (9.5 Oz)
Recharge Time	2 hours nominal
Weight	With battery < 1500gr (3.3 lb) Without battery < 1200gr (2.6 lb)
Dimensions (H X W X L)	150 X 110 X 190 mm

Imaging Characteristics	
Resolution	384 x 288 Array
Spectral Response	8 - 14μm
Frame Rate	9/25/30 Hz
Video Output	PAL/NTSC
NETD	<45 mK
Pixel Pitch Size	25μm
Lens Material	Germanium
Lens Size	35 mm
Field of View	15.6° x 11.7°
Focus	Adjustable 1m to infinity
Speed	f / 1.0
Image Frequency	9/25/30 Hz

# Sii AT

## ATHERMALIZED LENS CAMERAS

### Features and Benefits

- **Security & Safety**

The Sii AT is a 24/7 security camera used for observing and monitoring sensitive sites, proving clear thermal images in total darkness and adverse weather conditions.

- **Advanced Image Processing**

Enhanced contrast video for Video Analytics software. Innovative signal processing makes Fire and Hot Spot Detection possible.

- **Analog or IP, Fixed or PTZ**

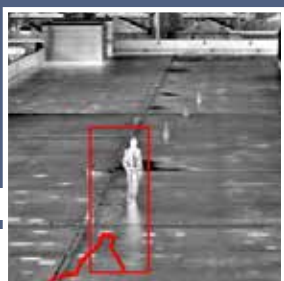
Available as a standard analog camera or with TCP/IP video and control on either a fixed or PTZ platform.

- **Low Power**

Less than 4w using DC or PoE power.

- **Rugged Design**

Designed and certified to IP66, hot, cold, dusty and other harsh environments.



- **Superb image quality**
- **Fire detection**
- **Easy installation**
- **Rugged design**

Part Number	Lens Size	Horizontal FOV		Focus Type	Core (Pixel Size)	Resolution		Options
		PAL	NTSC			PAL	NTSC	
CS7A25Q	7.5mm	77.7°	63.4°	Fixed	LWIR Uncooled (25μ)	384 x 288	320 x 240	Analog  IP (only with fixed systems)
CS8A25Q	8.5mm	64.2°	53.4°					
CS14A25Q	14mm	38.8°	32.3°					
CS19A25Q	19mm	28.3°	23.6°					
CS35A25Q	35mm	15.5°	13.0°					
CS50A25Q	50mm	11.0°	9.1°					
ES60A25Q	60mm	9.1°	7.6°					
ES100A25Q	100mm	5.5°	4.5°					
CS8A17V 🔥	8.5mm	73.2°			LWIR Uncooled (17μ)	640 x 480		PTZ (Analog)*  30Hz/9Hz Video
CS14A17V	14mm	44.0°						
CS19A17V 🔥	19mm	33.2°						
CS35A17V 🔥	35mm	17.6°						
CS50A17V	50mm	12.4°						
CS60A17V 🔥	60mm	10.3°						
ES100A17V	100mm	6.2°						

\*Fire Detection is not available with the PTZ unit

# Sii ML

## HIGH PERFORMANCE THERMAL CAMERAS

### Features and Benefits

- **Security & Safety**

The Sii ML is a 24/7 security camera used for medium and long range surveillance of critical infrastructure, delivering clear thermal images in total darkness and adverse weather conditions.

- **High Performance Core and Optics**

High sensitivity thermal cores with continuous zoom, dual field of view, autofocus and F1.0 motorized lenses up to 150mm provide high contrast video.

- **Simple Integration**

Embedded Pelco-D protocol and simple lens focus for scene optimization.

- **Rugged Design**

Designed and certified to IP66, hot, cold, dusty and other harsh environments.



- **Superb image quality**
- **Advanced optics**
- **Easy installation**
- **Rugged design**

Part Number	Lens Size	Horizontal FOV		Focus Type	Core (Pixel Size)	Resolution		Options
		PAL	NTSC			PAL	NTSC	
ES25M25Q	25mm	21.8°	18.2°	Fixed FOV (Motorized Focus)	LWIR Uncooled (25μ)	384 x 288	320 x 240	Analog  IP (only with fixed systems)  PTZ (Analog)* 30Hz/9Hz Video
ES50M25Q	50mm	11.0°	9.1°					
ES75M25Q	75mm	7.3°	6.1°					
ES150M25Q	150mm	3.7°	3.1°					
ES100Z25Q	15 - 100mm	37.1° - 5.5°	30.8° - 4.6°	Continuous Zoom (Autofocus)	LWIR Uncooled (17μ)	640 x 480		
ES135D25Q	45 / 135mm	12.6° / 4.1°	10.4° / 3.4°	Dual FOV (Autofocus)				
ES25M17V 🔥	25mm	24.8°		Fixed FOV (Motorized Focus)				
ES50M17V	50mm	12.4°						
ES75M17V	75mm	8.3°						
ES150M17V	150mm	4.2°						
ES100Z17V	15 - 100mm	42.2° - 6.2°		Continuous Zoom (Autofocus)				
ES135D17V 🔥	45 / 135mm	14.3° / 4.6°		Dual FOV (Autofocus)				



# Sii XRU

## EXTENDED RANGE THERMAL CAMERAS

### Features and Benefits

- **Innovative Uncooled Continuous Zoom**

The Sii XRU is a unique high resolution uncooled 25–255mm continuous zoom camera used for long range applications.

- **Advanced Imaging**

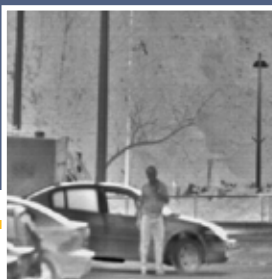
Proprietary image processing and autofocus capability provide industry leading thermal image quality.

- **Rugged Design**

Designed and certified to IP66 for operation in hot, cold, dusty, and other harsh environments.

- **Low Cost of Ownership**

The uncooled technology does not require regular maintenance, ensuring low cost of ownership.



- **Uncooled continuous zoom**
- **Advanced imaging**
- **Rugged design**
- **Long range performance**

Part Number	Lens Size	Horizontal FOV	Core(Pixel Size)	Frame Rate	Resolution	Video Types	Lens Type
ES225Z17V-0A020	25 - 225mm	24.5° - 2.8°	17μ LWIR Uncooled	30Hz	640 x 480	Analog	Continuous Zoom  Autofocus



# Sii XR

## EXTENDED RANGE THERMAL CAMERAS

### Features and Benefits

- **Long Range Cooled Continuous Zoom**  
Continuous zoom lenses with focal lengths up to 700mm provide detection performance beyond 20 kilometers (12 miles).
- **Advanced Imaging**  
Proprietary image processing and autofocus capability provide industry leading thermal image quality.
- **Rugged Design**  
Designed and certified to IP66 for operation in hot, cold, dusty, and other harsh environments.
- **IP, Analog and CameraLink**  
The Sii XR has the option of three outputs: IP, analog or CameraLink.



- **Continuous zoom**
- **Advanced imaging**
- **Rugged design**
- **Long range performance**

Part Number	Lens Size	Horizontal FOV	Core (Pixel Size)	Frame Rate	Resolution	Video Types	Lens Type
RS275Z15V-0A020	19 - 275mm (F5.5)	28.3° - 2.0°	15 $\mu$ MWIR Cooled	30Hz	640 x 512	Analog	Continuous Zoom
RS300Z15V-0A020	15 - 300mm (F4.0)	35.1° - 1.8°				IP	Autofocus
RS420Z15V-0A020	21 - 420mm (F4.0)	25.1° - 1.3°				CameraLink	
RS700Z15V-0A020	48.5 - 700mm (F5.5)	11.9° - 0.8					

# Accuracii AT Mini

## COMPACT THERMAL & COLOR CCD CAMERA SYSTEM

### Features and Benefits

- **Dual System for 24/7 Operation**

Detect and assess threats using both the color day CCD channel and the day/night thermal channel.

- **Dual Video Output**

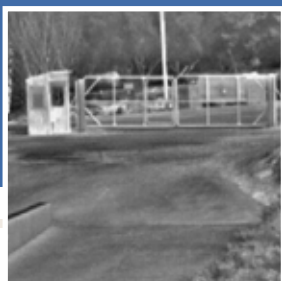
View both the color CCD and the thermal video channels at the same time.

- **Simple Integration**

Pelco-D compliance ensures easy integration and ease of use.

- **Compact Design**

With a compact, lightweight design, this advanced system can be integrated into any new or existing infrastructure with ease.



- **Compact and lightweight**
- **Low power consumption**
- **Dual channel**
- **Simple integration**

Part Number	Lens Size	Horizontal FOV		Thermal Lens Type	Thermal Core		Color Day Lens	Options
		PAL	NTSC		PAL	NTSC		
ACM19A17V	19mm		33.2°	Fixed FOV Athermalized  Fixed Focus	LWIR Uncooled (17μ) 640 x 480		Continuous Zoom 3.4 - 122mm  HFOV 57.8° - 1.7°	Wiper (day camera)
ACM25A17V	25mm		24.8°					
ACM35A17V	35mm		17.6°					
ACM50A17V	50mm		12.4°					
ACM60A17V	60mm		10.3°					

# Accuracii AT

## MULTI-SENSOR PAN & TILT CAMERA SYSTEM

### Features and Benefits

- **Dual Channel System for 24/7 Operation**

Detect and assess threats using both the color day CCD channel and the day/night thermal channel.

- **Athermalized Lens Configurations**

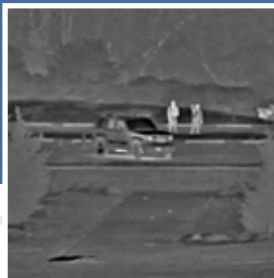
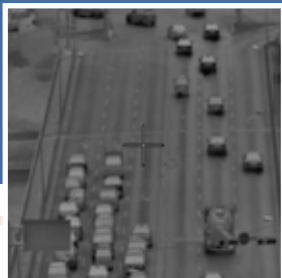
Available in several athermalized lens configurations that offer threat detection beyond 6km.

- **Simple Integration**

Pelco D compliance and Sensorii awareness software for easy integration and ease of use.

- **Rugged Design**

Designed and certified to IP66, hot, cold, dusty, and other harsh environments.



- **Dual output video**
- **Simple integration**
- **Robust design**
- **Focus-free optics**

Part Number	Lens Size	Horizontal FOV		Thermal Lens Type	Thermal Core (Pixel Size)		Color Day Lens	Options
		PAL	NTSC		PAL	NTSC		
AC19A17V	19mm		33.2°	Fixed FOV Athermalized  Fixed Focus	LWIR Uncooled (17μ) 640 x 480		Continuous Zoom 3.4 - 122mm  HFOV 57.8 °- 1.7°	Analog  TCP/IP
AC35A17V	35mm		17.6°					
AC60A17V	60mm		10.3°					
AC100A17V	100mm		6.2°					

# Accuracii ML

## HIGH PERFORMANCE MULTI-SENSOR CAMERA SYSTEM

### Features and Benefits

- **Detection and Observation**

Accuracii ML is a powerful day and night, multi-sensor system especially developed for security applications. Dual field of view or continuous zoom thermal lenses allows for wide area scene awareness and close-up threat assessment.

- **Dual Output Video**

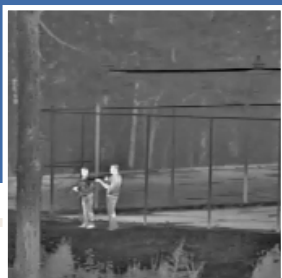
View or record both video channels at the same time.

- **Simple Integration**

Available in serial or TCP/IP configurations. Compliant with Pelco D and ONVIF Profile S (TCP/IP only).

- **Rugged Design**

Designed and certified to IP66, hot, cold, dusty, and other harsh environments.



- **Advanced lenses**
- **Fire detection**
- **Analog or TCP/IP**
- **Easy installation**

Part Number	Lens Size	Horizontal FOV		Thermal Lens Type	Thermal Core		Color Day Lens	Options
		PAL	NTSC		PAL	NTSC		
AC100Z17V	15 - 100mm	42.2° - 6.2°		Continuous Zoom	LWIR Uncooled (17μ) 640 x 480		Continuous Zoom 3.4 - 122mm	Analog TCP/IP LRF GPS Sunshield Image Stabilization
AC135D17V 🔥	45 / 135mm	14.3° / 4.6°		Dual Field of View			HFOV 57.8°- 1.7°	



# Accuracii XRU

ULTRA LONG RANGE MULTI-SENSOR CAMERA SYSTEM

## Features and Benefits

- **Unique Uncooled Thermal Camera**

The Accuracii XRU is a market leading dual-sensor surveillance system. This unique system features an advanced high resolution uncooled 25-225mm continuous zoom camera.

- **Low Maintenance**

Uncooled thermal requires little or no maintenance, ensuring a low cost of ownership.

- **Simple Integration**

Pelco D compliance, common industry mounting options, and scene awareness software for easy integration and ease of use.

- **Rugged Design**

Designed and certified to IP66, hot, cold, dusty and other harsh environments.



- **Continuous zoom channels**
- **Uncooled thermal detector**
- **Easy to integrate**
- **Rugged design**

Part Number	Thermal Lens	Horizontal FOV		Thermal Lens Type	Thermal Core (Pixel Size)		Color Day Lens	Options
		PAL	NTSC		PAL	NTSC		
AC225Z17V	25 - 225mm	24.5°-2.8°		Continuous Zoom	LWIR Uncooled (17μ) 640 x 480		3.4 - 122mm HFOV 57.8°- 1.7°	Analog TCP/IP LRF
							10 - 320mm HFOV 35.3° - 1.1°	GPS Sunshield Image Stabilization

# Accuracii XR

## ULTRA LONG RANGE MULTI-SENSOR CAMERA SYSTEM

### Features and Benefits

- **Cooled Thermal Camera System**

The Accuracii XR is a cooled thermal camera system that combines high sensitivity and ultra long range performance, providing surveillance beyond 20 km.

- **Dual Channel / Dual Output Video**

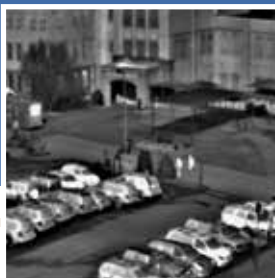
View both thermal and color CCD channels at the same time.

- **Simple Integration**

Pelco D compliance, common industry mounting options, and scene awareness software for easy integration and ease of use.

- **Rugged Design**

Designed and certified to IP66, hot, cold, dusty and other harsh environments.



- **Cooled thermal camera**
- **Dual continuous zoom**
- **High sensitivity**
- **Accurate pan-tilt unit**

Part Number	Lens Size	Horizontal FOV		Thermal Lens Type	Thermal Core		Color Day Lens	Color Day Lens
		PAL	NTSC		PAL	NTSC		
AC275Z15V	19 - 275mm	28.3° - 2.0°		Continuous Zoom	MWIR Cooled (15μ) 640 x 512	10 - 320mm HFOV 35.3° - 1.1°	Analog TCP/IP LRF GPS	
AC300Z15V	15 - 300mm	35.1° - 1.8°		Continuous Zoom				
AC420Z15V	21 - 420mm	25.1° - 1.3°		Continuous Zoom				
AC700Z15V	48.5 - 700mm	11.9° - 0.8°		Continuous Zoom		15.6 - 500mm HFOV 22.4° - 1.8°		



# Claritii

## LED ILLUMINATED CAMERAS

### Features and Benefits

- **Long Range 24/7 Imaging**  
Covert near-IR LED illumination and long-range optics provide court-admissible quality video surveillance beyond 5km (day) and 600m (night), even in zero light conditions.
- **Dedicated Day and Night Cameras**  
Separate cameras dedicated and optimized for day or night imaging provide vibrant color day video and high contrast night video.
- **Simple Installation**  
Pelco D compliance and common industry mounting options for easy integration.
- **Easy Export**  
No export license required.



- **Zero light imaging**
- **Accurate positioning**
- **Continuous zoom**
- **Natural contrast video**

Part Number	Day Camera Day Lens	Night Camera Night Lens	Focus Type
C600-000	Day Color CCD 3.3 - 119mm  HFOV 60.2° - 1.8°	Near-IR Low Light CCD 8.6 - 154mm  HFOV 32.0° - 2.3°	Autofocus Continuous Zoom



# Discoverii

## LONG RANGE LASER ILLUMINATION CAMERAS

### Features and Benefits

- **Zero Light Imaging**  
Covert near-IR laser illumination and long range optics provide court-admissible quality video surveillance beyond 15km (day) and 4km (night), even in zero-light conditions.
- **Dedicated Day and Night Cameras**  
Separate cameras dedicated and optimized for day or night imaging provide vibrant color day video and high contrast night video.
- **Detection and Assessment**  
The addition of an optional wide area thermal video channel creates a complete threat detection and assessment package.
- **Easy Export**  
No export license required for most countries.



- **Zero light imaging**
- **Long range assessment**
- **Rugged design**
- **Simple integration**

Part Number	Day Camera Night Camera	Lens Type HFOV	Optional Imager	Video Options	Cable Options
D3000	Color CCD / GreyScale CCD	Continuous Zoom 12.5 - 1500mm  22° - 0.09°	45/135mm Thermal Add-On (25μ)	PAL (25Hz) NTSC (30Hz)	Standard (4m)
					Extended (8m)
					Extended (20m)





# Fire Risk & Detection

Enhance the safety of equipment and personnel with Vumii's embedded solutions, which transforms Sii and Accuracii cameras into versatile fire and heat detection systems.

The Fire Risk and Detection capabilities are able to detect and identify a nearly unlimited number of fire and heat sources, while avoiding false alarms from hot spots at the scene. They are accurate at detecting increases in heat as well as large fires as far as 6km in the longest range configuration.

## LONG RANGE FIRE DETECTION

Examines a scene for "hot spots" and determines which pixels meet the pre-defined criteria for the accurate detection of fire.

## HEAT DETECTION

Detects heat above the user-defined threshold, so that potential fires and other heat-related risks can be prevented.



Once the fire detection capability is set, pixels exceeding the user-defined threshold are shown in red, so that it is clearly visible within the video image.

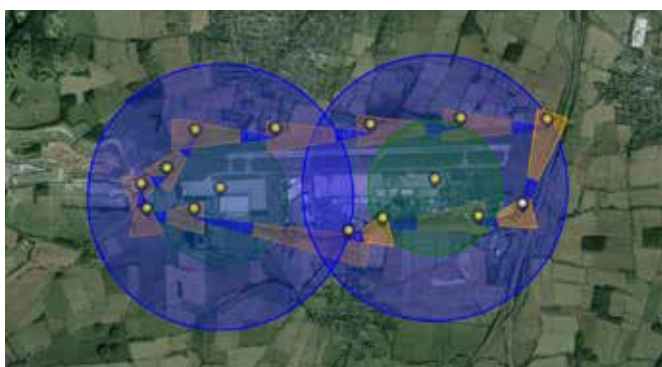
**Fire risk and detection capabilities are available in the Sii AT, Sii ML and Accuracii ML camera systems.**

## Sitebuilder

### SITEBUILDER – CAMERA SITE DESIGN TOOL

Vumii Sitebuilder is the easiest, most user-friendly tool available for designing a site security system. SiteBuilder allows you to use the incredibly accurate and always available Google Maps™ database to place cameras to match your specific security site needs.

- Find your specific site in Google Maps™
- Show and fill in coverage gaps
- Simulate site-specific needs
- See Security or Fire Detection coverage
- Save unlimited sites and site variations
- Change sensor, mounting height, FOV, etc

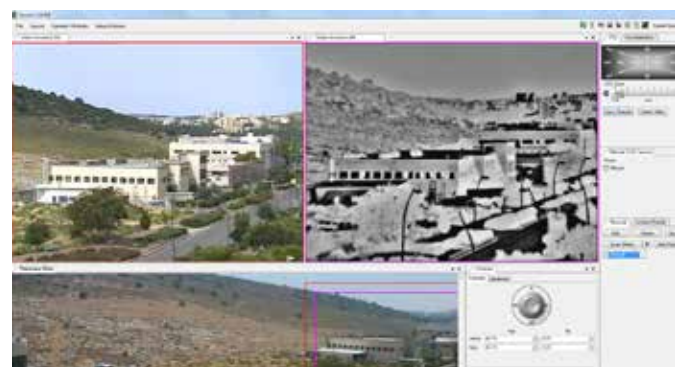


## Sensorii

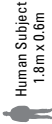
### SENSORII CAMERA CONTROL & AWARENESS SOFTWARE

Sensorii camera control software provides intuitive camera control and maximum scene awareness using the camera control software's automatic panorama generator and control widgets. The panorama provides a daytime image of the scene that is used to guide the camera at night. The user is able to either click to make the camera point anywhere in the scene or draw a box that commands the camera to show the exact field of view desired.

- Panorama creator for night-time awareness
- Point-and-click control in panorama/video
- Unlimited number of tours and presets
- Perfect for multi-sensor PTZ cameras



LEGEND



Human Subject  
1.8m x 0.6m

Thermal Recognition

6 lines on target

Thermal Detection

2 lines on target

Night Assessment

60 lines on target

Day Recognition

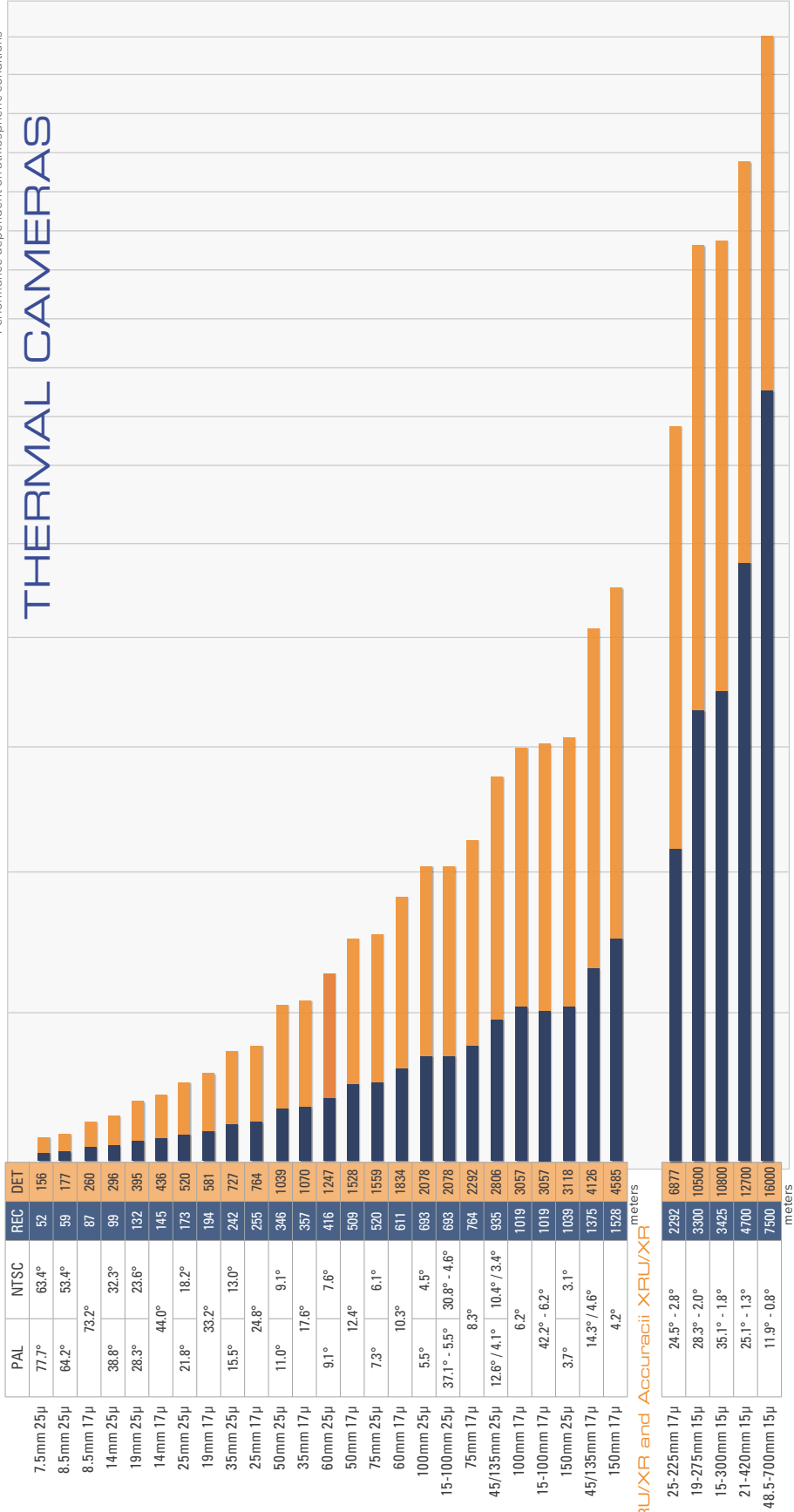
6 lines on target

Day Assessment

60 lines on target

Sii AT / ML and Accuracii AT / ML

Performance dependent on atmospheric conditions



Sii XRU/XR and Accuracii XRU/XR

25-225mm 17µ	24.5° - 2.8°	2292	6877
19-275mm 15µ	28.3° - 2.0°	3300	10500
15-300mm 15µ	35.1° - 1.8°	3425	10800
21-420mm 15µ	25.1° - 1.3°	4700	12700
48.5-700mm 15µ	11.9° - 0.8°	7500	16000

Accuracii AT / ML / XRU/XR (Day Color)

3.4-122 mm	57.8° - 1.7°	745	3100
10-320 mm	35.3° - 1.1°	1000	4200
15.6-500 mm	22.4° - 0.45°	1575	6500

Clartii Day / Night Cameras

Night	32.0° - 2.3°	600
Day	60.2° - 1.8°	745

Discoverii Day / Night Cameras

Night	22.8° - 0.18°	3000
Day	22.8° - 0.18°	7400
Thermal (option)	12.2°/4.1°	935

kilometers

DAY COLOR CAMERAS

ILLUMINATED SYSTEMS

SYSTEM RANGE PERFORMANCE

[www.vumii.com](http://www.vumii.com)  
[info@vumii.com](mailto:info@vumii.com)







**vumii**  
[www.vumii.com](http://www.vumii.com)